

Lepidoptera in Cheshire 2004

A report detailing records received for the moths and butterflies
of Vice-county 58 (Cheshire)



*The Biodiversity Information System for
Cheshire, Halton, Warrington and Wirral*



**Lancashire & Cheshire
Entomological Society**

**S.P. Farrell, S.H. Hind, B.T. Shaw
8th June 2005**

1. Introduction

This report follows a similar format to the last few years' reports, although regular recipients will notice a change in the way the moth data have been summarized. The butterfly section is, as in previous years, a condensed version of Barry Shaw's report for Butterfly Conservation. Special thanks go to Barry for his usual excellent summary of weather conditions in 2004, which goes some way to assist interpretation of the variation in numbers and species recorded.

The moth data have been combined to produce a single narrative in Bradley and Fletcher order for all moth species, rather than being split into sections on micromoths and macromoths. With a few exceptions, the macromoths are found from 1631 on.

For the first time since 1976 we can report new species of both moths and butterflies in the county with eleven species added to the county list. Full details are contained within the butterfly and moth sections that follow.

Another change to the format has, in effect, been forced upon us by the excellent quality photographs, which recorders have sent for inclusion in the report! We always welcome photographs in any format of the rarer moths and digital photographs of any of the Cheshire Butterflies caught in the relevant year. The unfortunate effect of this is that it creates a large file size, often in excess of 2MB, which can take a long time to download. We have therefore created two separate versions of the report – one with photographs and one without. They can both be downloaded via the Internet, and appropriate links will be sent around to all online members of Cheshire Moth Group (CMG), Lancashire & Cheshire Entomological Society (LCES) and other usual recipients of this report. For those who take the version without photographs, there will also be a picture gallery, which can be downloaded separately when convenient. The paper version of the report will include black and white photographs and maps, and will be posted in the normal way.

We are still working through old publications, including (dates approximate) the Walker list (1885), the Day list (1903), the Ellis list (1890) and updated version by Mansbridge (1940), and the finer data behind Rutherford (1994). The available LCES journals and newsletters, and, eventually, local Lepidoptera collections will also be scoured for records over the next couple of years or so. We then plan to produce a definitive publication detailing all the county's lepidoptera for the first time ever.

As always, many thanks to all recorders and organizations who have already submitted records to us for 2004 and for previous years. Without your efforts this report would not be possible. Please keep the records coming! This request also most definitely applies to recorders who have not sent in records for 2004 or even earlier. It is not yet too late to send in historic records, as they will all be included within the planned Atlas. The anticipated deadline for the receipt of records for incorporation into the Atlas is 31st December 2005.

2. Butterflies

Barry T. Shaw

Cheshire County Butterfly Recorder

Please note that in this section of the report, references to Cheshire relate to areas within the modern Cheshire county boundaries but do include the Wirral area (i.e. not just VC58).

Expectations for a repeat of the excellent weather conditions of 2003 proved to be wide of the mark with several months being almost a washout as far as recording was concerned, especially during the second half of the year. Not surprisingly, a combination of poor weather, coupled with contributors not being encouraged to spend as much time recording, meant that most species showed a marked decline from the previous year. In these conditions it is sometimes difficult to nominate a "Butterfly of the Year" for Cheshire*, but in 2004 there is little doubt that the honour should go to the White Admiral *Limenitis camilla* sightings at Woolstonwood, Crewe on 29th June and Alsager on 22nd July and 27th July. These were the first ever sightings of this species in the county and were one of very few highlights in an otherwise mediocre year.

2004 commenced with dull, wet and mainly mild weather, except for a short cold spell towards the end of January. In these conditions it was not surprising that the only insect reported during the month was in a brief sunny period when a Brimstone *Gonepteryx rhamni* was found at Oakhanger Moss on the 6th.

In contrast, February turned out to be the sunniest in north-west England since records began, with these conditions encouraging good numbers of butterflies to emerge from hibernation. An early Red Admiral *Vanessa atalanta* flying around a garden at Elworth on the 1st was an unexpected bonus, although in the last

few years there has been a significant increase in sightings of this butterfly during the winter months – possibly evidence of global warming? There was another Brimstone *G. rhamni* sighting at Wilmslow on the 5th, a Comma *Polygonia c-album* at Swettenham Meadows on the 8th, followed by reports of the Small Tortoiseshell *Aglais urticae* and Peacock *Inachis io* from scattered sites from the 15th onwards.

Weather conditions in March did not favour butterflies with mostly mild, but unsettled periods coupled with some heavy rainfall. The earliest Small White *Pieris rapae* visited a garden at Hale on the 21st, whilst a Green-veined White *Pieris napi* was seen at Handbridge, Chester on the 24th.

A second Red Admiral *V. atalanta* was recorded at Styal on the 29th and the earliest ever Painted Lady *Vanessa cardui* in Cheshire was seen at Inner Marsh Farm, Burton on the 30th and 31st. The last day of the month produced a Speckled Wood *Pararge aegeria* at Greasby, together with another earliest county record of a Small Copper *Lycaena phlaeas* at Newgate, Wilmslow.

There was little improvement in weather conditions during April with unsettled periods coupled with some heavy rainfall. Not surprisingly those species of butterfly that did appear were only recorded in very small numbers. A Large White *Pieris brassicae* was seen in Macclesfield on the 3rd, the Orange-tip *Anthocharis cardamines* at Hockenhull Platts on the 10th, a Holly Blue *Celastrina argiolus* at Hale Duck Decoy on the 11th and the Green Hairstreak *Callophrys rubi* at Newchurch Common on the 16th. Despite the less than ideal conditions an unusually early Common Blue *Polyommatus icarus* emerged at Pickering's Pasture on the 25th. May was an exceptionally dry month, but with a cool northerly airstream predominating. The majority of butterflies emerging during this period appeared on fairly typical dates, but few species were seen in anything other than small numbers. Records showed that the exception to this was the single brooded Orange-tip *A. cardamines* that had a good breeding season following a late start. During the month the earliest Dingy Skipper *Erynnis tages* appeared at Inner Marsh Farm on the 13th, the Wall was recorded at Inner Marsh Farm on the 18th, the Small Heath *Coenonympha pamphilus* at Inner Marsh Farm on the 18th and the Large Skipper *Ochlodes faunus* at Greasby and New Ferry Butterfly Park on the 31st.

An exceptionally warm spell of weather in early June produced an influx of Painted Lady *V. cardui* butterflies with an initial report from Pickering's Pasture on the 2nd, followed by widespread sightings over the next few days. The Meadow Brown *Maniola jurtina* emerged at Greasby on the 6th, with sightings the Small Skipper



Thymelicus sylvestris at Gatewarth on the same date. During this period of high temperatures single Clouded Yellow *Colias croceus* butterflies were seen at Marbury Country Park on the 7th and Hebden Green on the 13th – this insect has been scarce in Cheshire in recent years and there were no further reports during 2004. At Bagmere the Small Pearl-bordered Fritillary *Boloria selene* was recorded from the 7th, with an encouraging peak of 28 insects on the 16th. The early part of the month also produced good numbers of the Common Blue *P. icarus*, with contributors at most regularly monitored sites commenting on a successful first brood. Weather conditions were probably responsible for Cheshire's earliest ever sightings of the White-letter Hairstreak *Satyrrium w-album* at Mollington and Caughall on the 20th. The Gatekeeper *Pyronia tithonus* was then the next insect to appear with a sighting at Inner Marsh Farm on the fairly typical date of the 28th. Unfortunately, the weather deteriorated late in the month with a predictable fall in butterfly numbers, although a totally



unexpected highlight occurred on the 29th with the sighting of Cheshire's first ever White Admiral *L. camilla* at Woolstonwood, Crewe.

There was certainly no improvement in weather conditions during July with very few days that were conducive to butterfly recording. It was only to be expected that most species were only seen in small numbers, although the Ringlet *Aphantopus hyperantus* proved to be the exception with a record count of 495 insects in the Wych Valley on the 2nd. Later in the month the Ringlet *A. hyperantus* was also recorded at an additional site in the Wych Valley, together with a completely new area near Audlem - more than 10 miles from the existing colonies. The earliest Purple Hairstreak *Neozephyrus quercus* was found at Congleton on the 5th, a Grayling *Hipparchia semele* at Thurstaston cliffs and West Kirby on the 13th, a Dark Green Fritillary *Argynnis aglaja* at Walker Barn, Pennine hills on the 22nd and the Silver-studded Blue at Thurstaston Common later in the month. Highlight of July was again reserved for the sighting of another White Admiral *L. camilla* seen in a garden near Alsager on the 22nd and 27th – a further insect was also recorded outside the county boundary at Hadfield during this same period. Weather conditions in August, with heavy rain and flooding for much of the period, produced few days when butterfly recording was possible. It was the grassland species that seemed to suffer the greatest losses at this time with the Gatekeeper *P. tithonus* and Meadow Brown *M. jurtina* numbers already sharply reduced by mid-month, whilst at most localities the second brood of the Common Blue *P. icarus* was recorded in much lower numbers than the earlier brood.



The dismal weather in 2004 continued into September with a succession of Atlantic depressions producing more rain. Mid-month saw the latest sightings of several species – the Wall *Lasiommata megera* at Chester on the 13th, the Common Blue *P. icarus* at Dane-in-Shaw on the 16th, the Meadow Brown *M. jurtina* at Adlington on the 18th and the Gatekeeper *P. tithonus* at Congleton on the 19th. Highlights during the month were almost non-existent, although the Red Admiral *V. atalanta* was seen in modest numbers during this period.

Numbers diminished even further during October with the latest Painted Lady *V. cardui* at Astbury Mere on the 10th, a Holly Blue *C. argiolus* (possibly from a third emergence) at Heswall on the 14th, a Brimstone *G. rhamni* at Giant's Castle Rock, Styal on the 28th and a Small Copper *L. phlaeas* at Old Pale, Delamere on the 30th.

November sightings were confined to four species with the latest Red Admiral *V. atalanta* at Haslington on the 4th, a Peacock *I. io* at Handforth on the 13th, the latest ever Cheshire records of the Comma *P. c-album* at Astbury and Handforth on the 13th, and a Small Tortoiseshell *A. urticae* at Heswall on the 23rd. In most years the Peacock *I. io* is the first of the over-wintering butterflies to hibernate, but in 2004 it was the last species to be seen with December sightings at Daresbury on the 7th and another at Wybunbury Moss on the 30th.

2.1 Systematic list of Cheshire & Wirral Species

Small Skipper *Thymelicus sylvestris* (Poda, 1761)

With sightings from only 66 tetrads compared to 78 tetrads in 2003, it was a fairly mediocre year for this species. Peak numbers were recorded in late July, but fell sharply at the onset of the poor weather conditions in early August. Highest count in the lowlands was of 39 at Handforth on 23rd July, but sites in the Pennine hills produced some good counts – 30 at Bollinhurst Reservoir, Disley on 29th July, 31 near Higher Disley on the same date, 30+ in Wildboarclough on 3rd August and 26 at Bakestonedale Moor on 8th August. There was a series on notable sightings in early June including Gatewath on the 6th, Rixton Claypits on the 7th, Moore Nature Reserve on the 7th and Chester on the 9th. Latest sighting at Astbury Mere on 27th August.

Large Skipper *Ochlodes faunus* (Turati, 1905)

Several sites produced excellent counts in mid-June including 90 at Greasby on the 13th, 55 at Bagmere on the 16th and 104 at Handforth on 16th – this latter count being the highest at any site in the county since the mid-1990s. These counts do, however, mask the fact that at most localities numbers have been falling in recent years – in 1994 there were double-figure counts of this butterfly at 68 localities, compared with only 8 sites in

2004. During the last ten years the earliest sighting has always occurred during the last week of May with 2004 continuing this pattern with sightings at Greasby and New Ferry Butterfly Park on the 31st. Latest sightings at Heswall on 8th August and Rixton Claypits on the 15th.

Dingy Skipper *Erynnis tages* (Linnaeus, 1758)

Regeneration work at Cheshire's prime site at Ashton's Flash, Northwich took place during the year. This meant that with public access prohibited there were only a few visits possible by authorised personnel - maximum count at this time of 14 on 19th May. Nearby at Carey Park there were significant counts of 29 on 17th May and 20+ on 1st June, whilst it was encouraging news that the species has also spread to Winnington Limebeds where 15 were recorded on 30th May. No systematic surveys were undertaken at the Weaver Parkway colonies, but small numbers were recorded in May with a highest count of 9 on the 24th. Most unexpected news was of a newly discovered colony, away from this species stronghold in mid-Cheshire, at Astbury Mere, Congleton where there were sightings between 20th May and 9th June with a maximum count of 3 on 23rd May. Reports from the surviving colonies on the Wirral were received from Inner Marsh Farm and Thurstaston, with this latter site producing a maximum count of 6 on 20th May. The foodplant, Bird's-foot Trefoil *Lotus corniculatus*, of the Dingy Skipper *E. tages* appeared to flower later than normal this year in Cheshire with the result that peak numbers of the butterfly occurred on 23rd May, compared to 8th May in 2003. Earliest sighting at Inner Marsh Farm on 13th May; latest at Astbury Mere on 9th June.

Clouded Yellow *Colias croceus* (Geoffroy, 1785)

It was another disappointing year for this butterfly with just two reports. The earliest of these sightings was at Marbury Country Park on 7th June (at the same time that many migrant Painted Lady *V. cardui* butterflies were appearing in the county). The only other report was of a single insect was at Hebden Green, Winsford on 13th June.

Brimstone *Gonepteryx rhamni* (Linnaeus, 1758)

Most sightings were again centred around breeding colonies in the east of the county where numbers have remained relatively stable in recent years. Numbers are, however, continuing to increase along the Mersey Valley, especially at Moore Nature Reserve where there was an exceptional count of 39 butterflies on 24th April. In the west of Cheshire there are still only scattered sightings, with no reports this year from the Wirral and just a few isolated sightings from the Chester and Farndon areas. As always, the Brimstone *G. rhamni* was most conspicuous in the spring months following hibernation with 72% of sightings during this period. Earliest sighting at Oakhanger Moss on 6th January; latest at Giant's Castle Rock, Styal on 28th October.



Large White *Pieris brassicae* (Linnaeus, 1758)

Although sightings were widespread across lowland parts of the county it was only an average year for this insect. Numbers of the first brood peaked in late May, although during this period no site recorded a count in double-figures. The second emergence involved slightly larger numbers, but with no discernible peak in the main flight period between mid-July and early September. Throughout this period the only site recording reasonable numbers was Rixton Claypits with counts of 64 on 31st July and 78 on 15th August. As usual there were fewer reports from the moorland fringes in the east of Cheshire where the majority of sightings probably related to wanderers from lowland breeding sites. Unlike 2003, there was no evidence of any immigration this year. Earliest sighting at Macclesfield on 3rd April; latest at

Handforth on 24th October.

Small White *Pieris rapae* (Linnaeus, 1758)

It was not a particularly successful year for this insect with sightings from 45% of recorded tetrads, against 51% in 2003. The spring brood peaked from late May to early June, with the larger summer emergence showing no discernible peak between mid-July and mid-September. A count of 70+ feeding on Sea Aster *Aster tripolium* at Hale Shore on 17th August was the third year in succession that there has been a significant concentration during August at this site – it would be interesting to know whether these butterflies were migrants, or had bred locally. Earliest sighting at Hale on 21st March; latest at Heswall on 13th October.

Green-veined White *Pieris napi* (Linnaeus, 1758)

As frequently occurs this butterfly was the most widely recorded species in Cheshire, with its abundance being especially noticeable on the Pennine moorlands where few other species occur in significant numbers. Spring brood insects peaked in mid-May with the highest counts generally emanating from the eastern foothills – 20 at Macclesfield Forest on 14th, 20 at Bakestonedale Moor on the 16th, 20 at Cut-thorn Hill on the 16th and 30+ at Helmsley Farm, Wildboarclough on the 16th. The summer brood peaked slightly later than normal in early August, but as usual was seen in larger numbers than the earlier emergence, with the largest counts being 50 at Stapelford on 28th July, 70 at Rixton Claypits on 31st July and 111 along the South Cheshire Way at Hankelow on 5th August. Earliest sighting was at Handbridge on 24th March. Numbers diminished rapidly from mid-September with very few sightings in October – the latest at Rixton Claypits on the 6th and Haslington on the 9th.

Orange-tip *Anthocharis cardamines* (Linnaeus, 1758)

The Orange-tip *A. cardamines* fared better than most species this year with sightings in 45% of recorded tetrads, compared to 38% in 2003. Undoubtedly, the reason for this success was that it emerged during the better weather conditions of the spring months. Peak numbers occurred in early May, following a synchronised emergence at many sites throughout the county from 20th – 25th April. Highest counts during May included 125+ at Hockenhull Platts on the 2nd, 58 at Handforth on the 7th and 34 at Caughall on the 16th. Egg-laying was not observed until the comparative late date of 7th May at Mobberley. Earliest sightings, other than one emerging in a conservatory at Thelwall on 1st April, were along the Gowy Valley at Hockenhull Platts on 10th April and Stapelford the following day. Latest sightings in June were at Congleton and West Kirby on the 8th, Macclesfield, Rixton Claypits and Peckforton on the 9th, and Wildboarclough on the 13th.

Green Hairstreak *Callophrys rubi* (Linnaeus, 1758)

Records were received from 13 of Cheshire's traditional mossland breeding sites in the lowlands indicating a relatively good year for this insect. Significant counts at these localities included 39 at Flaxmere on 1st May, 31 at Shemmy Moss on 2nd May, 23 at Cranberry Moss on 16th May and 56 at Brookhouse Moss on 23rd May. At another lowland site on Saltersley Moss numbers had fallen to single figures during the last few years, not helped by the devastation caused by large-scale peat extraction, but in 2004 there was a maximum count of 21 butterflies on 7th May. Recording work in the Pennine foothills resulted in small numbers being located at eight sites, although at another traditional site at Jacksonedge Quarry the butterfly could not be found. The only double-figure counts in the hills were of 14 at Bosley Cloud on 1st May and 11 at Cut-thorn Hill on 16th May. Earliest sighting at Newchurch Common on 16th April; latest at Danebower Hollow on 13th June.

Purple Hairstreak *Neozephyrus quercus* (Linnaeus, 1758)

Estimating numbers of this elusive treetop insect has always been difficult with most contributors content to simply record its presence at a particular site. Gauging population trends is even more of a problem, but it does appear that for the third successive year this butterfly has been more difficult to find. Sightings in the east of Cheshire, where the Purple Hairstreak *N. quercus* has always been scarcer, were restricted to four localities, although these included new sites at Congleton, Disley and Jepsonclough Farm, Pott Shrigley. In 2004 the poor weather conditions may have contributed to a fall in the number of records that was reflected across the county. Reports in 2004 were received from 14 tetrads, against 24 tetrads in 2003. Highest count of the year was of 12 at Neston on 30th July. Earliest sightings at Congleton on 5th July and Dunkirk the following day. Latest report from Higher Poynton on 29th August.

White-letter Hairstreak *Satyrrium w-album* (Knoch, 1782)

This was a poor year for records with fewer sightings than any year since 1999. Reports were received from just 11 tetrads, with the majority of these emanating from regular sites around the Wirral and Chester areas. The only other sightings were from known mid-Cheshire localities at Wigg Island and Leftwich. A sighting at Denhall Lane, Wirral on 5th July was the only report in 2004 from a previously unrecorded tetrad. Earliest sightings at Mollington and Caughall on 20th June; latest at Neston on 5th August.

Small Copper *Lycaena phlaeas* (Linnaeus, 1761)

Considering weather conditions the Small Copper *L. phlaeas* had a reasonable breeding season with sightings from 78 tetrads. The spring brood peaked in late May, but comprised of mainly small numbers with a maximum count of 16 at Old Pale on 16th May. The more numerous second emergence peaked over a lengthy period throughout August, with significant counts of 16 at Saltersley Moss on 7th August and 27 at Old Pale on 13th August. A series of sightings in mid-October at Saltersley Moss and Old Pale would indicate a partial third brood. The earliest ever county sighting occurred at Newgate on 31st March; latest at Old Pale on 30th October.

Silver-studded Blue *Plebejus argus* (Linnaeus, 1758)

It was a very disappointing year for the Silver-studded Blue *P.s argus* at the Thurstaston Common colony where survey work during the flight period failed to locate any butterflies. Fortunately, five males were seen and photographed by a casual observer in late July. The cause for the very low numbers would appear to be a second outbreak in recent years of the destructive Heather Beetle *Lochmaea suturalis* - the larvae of this beetle damage the Heather *Caluna vulgaris* that is the foodplant of the Silver-studded Blue *P.s argus*. It remains to be seen whether the butterfly can recover from this latest setback.

Common Blue *Polyommatus icarus* (Rottemburg, 1775)

The Common Blue *P. icarus* was one of very few butterflies to fare well during the year, although even this success was restricted at most sites to the first brood. Reports of this excellent first emergence were received from throughout the county, peaking in early June, with selective counts of 76+ at Astbury Mere on 30th May, 60+ at Greasby on 6th June, 141 at Rixton Claypits on 7th June, 56 at Pickering's Pasture on 13th June and 111 at Hooksbank Wood, Bollin Valley on 14th June. Unfortunately, the effects of poor weather conditions produced very mixed results for the second emergence. During this period there were significant counts of 30 at Moore Nature Reserve on 8th August, 46 at Pickering's Pasture on 8th August, 63 at Rixton Claypits on 15th August and 60 at Astbury Mere on 27th August. Counts at many other sites at this time were, however, extremely disappointing. This was highlighted at the regularly surveyed colony at Arclid Sand Quarry where there was a conservative estimate of 250+ insects on 30th May, but a peak count during the second emergence of only 10 butterflies on 3rd August. In the hilly regions of Cheshire, to the east of the Macclesfield Canal, data has revealed that over the past five years only single butterflies have been recorded at any locality. Whilst less recording is undertaken in these areas, with colonies tending to be smaller than those at lowland sites, this does represent a considerable reduction in numbers compared to the 1990's. Earliest sighting at Pickering's Pasture on 25th April; latest at Dane-in-Shaw Pasture on 16th September.

Holly Blue *Celastrina argiolus* (Linnaeus, 1758)

Records show that in Cheshire this butterfly is still at a fairly low ebb with numbers steadily falling since late 1999. As usual the majority of sightings in 2004 were from parks and gardens - records received from 67 tetrads this year, compared to 82 tetrads in 2003. Spring brood insects in 2004 occurred from 11th April to 14th June, with the more numerous second generation extending from 4th July to 5th September. Two late insects at Heswall on 14th October probably related to a partial third emergence and were the latest ever county sightings. Records were fairly evenly spread across the Cheshire lowlands with a slightly western bias - sightings were received during the year from most 10km squares, with the exception of SJ47, SJ55 and SJ66. Earliest sighting at Hale Duck Decoy on 11th April; latest at Heswall on 14th October.

White Admiral *Ladoga camilla* (Linnaeus, 1764)

Brief periods of favourable weather conditions, coupled with warm southerly winds, were probably responsible for the ****first Cheshire records** of the White Admiral *L camilla* on brambles *Rubus sp.* at Woolstonwood, Crewe on 29th June, followed by another in a garden near Alsager on 22nd July and 27th July. This species is the first addition to the Cheshire butterfly list since 1976. Interestingly, another insect was reported to the north-east of the county in the High Peak at Hadfield on 20th July.

Red Admiral *Vanessa atalanta* (Linnaeus, 1758)

It was a poor year for this immigrant with sightings reported from fewer tetrads than the Painted Lady *V. cardui* - the first time this has happened since 1996. Following the report of an overwintering butterfly at Elworth on 1st February there were only isolated sightings until June. Very small numbers were then noted throughout Cheshire, but the highest count at any locality during the month was of only 4 insects at Woolston Eyes on the 11th. There were then few sightings in July before numbers gradually built up during August to a peak in September, with maximum counts of 9 at Heswall on 3rd September and 12 at Bath Vale Meadows on the 8th. Earliest sighting at Elworth on 1st February; latest at Haslington on 4th November.



Painted Lady *Vanessa cardui* (Linnaeus, 1758)

By mid-February unprecedented numbers of this immigrant were already arriving along the south coast of England, with just a single insect reaching Cheshire at Inner Marsh Farm on 30th March. There were then no further sightings until early June when, during an exceptional warm spell of weather, there were widespread sightings of small numbers throughout the county. During this same period the only significant count was of 30 at Meols on the 9th. There were then very few sightings during July, before a scattering of records of small numbers from mid-August to mid-September – bearing in mind the invasion in early June it would appear that the species had a relatively poor breeding season. During this latter period the only site recording a significant count was Rixton Claypits with 22 on 15th August. Earliest ever Cheshire sighting at Inner Marsh Farm on 30th and 31st March; latest at Astbury Mere on 10th October.

Small Tortoiseshell *Aglais urticae* (Linnaeus, 1758)

Good numbers reappeared after hibernation from early April to mid-May, with several sites producing significant counts including 80+ around Hale Head on 24th April and 100+ at Woolston Eyes on 30th April. In the last few years there had been indications that the Small Tortoiseshell *A. urticae* was slowly recovering to levels seen in the mid-1990s, but these improvements would appear to have come to a halt in 2004. Sites experiencing a particularly poor breeding season included Old Pale, Arclid Sand Quarry and Pickering's Pasture. First generation butterflies peaked from mid-July to mid-August, but whilst a few localities recorded noteworthy counts, numbers were disappointingly low at most sites. Those localities recording good numbers during this period were restricted to Woodford Aerodrome with 90 on 28th July, Stapelford with 100+ on 28th



July and Bakestonedale Moor with 72 on 8th August. A subsequent smaller peak during September related to either a small second brood, or a delayed emergence from the first brood – the only site with significant numbers at this time was Frodsham Marshes with 215 on 5th September. Earliest sightings at Chester and Heswall on 15th February; latest at Heswall on 23rd November.

Peacock *Inachis io* (Linnaeus, 1758)

It was surprising that good numbers emerged from hibernation, bearing in mind that the Peacock *I. io* had been quite scarce the previous autumn – highest counts in the early months were of 40+ around Hale Head on 24th April and 30+ at Woolston Eyes from late April to early May. Numbers then gradually diminished until there was a final sighting of an over-wintering insect at

Wilmslow on 7th July. Butterflies began appearing from the single annual brood in late July, but by early August had already peaked. Few localities produced good numbers at this time, except Woolston Eyes with 100+ on 5th August and Rixton Claypits with 92 on 15th August - even at this latter site numbers showed a substantial fall from those recorded in recent years. Earliest sighting at Fearnhead, Warrington on 15th February; latest at Daresbury on 7th December and Wybunbury Moss on 30th December.

Comma *Polyommata c-album* (Linnaeus, 1758)

Reports were received from all months outside the main hibernation period, but with three distinct peaks. The earliest of these was when the overwintering individuals emerged in late April, followed by the summer emergence from late July to early August and then the autumn emergence from late September to early October. Although widespread in the county the Comma *P. c-album* is rarely seen in significant numbers, with the highest counts in 2004 of 8 insects at New Ferry Butterfly Park on 11th July and the same number at Knutsford on 4th October. Earliest sighting was of one disturbed from a bramble *Rubus sp.* patch during scrub clearance at Swettenham Meadows on 8th February. Latest ever county sightings occurred at Handforth and Astbury on 13th November.

Small Pearl-bordered Fritillary *Boloria selene* ([Denis & Schiffmüller], 1775)

First visit to the breeding site at Bagmere was on 7th June when 8 individuals were seen flying together around a small clearing. As can be seen from the following statistics it would appear that management work over the last few years is having a beneficial effect at this isolated colony with numbers slowly increasing. Sightings at Bagmere extended from 7th June to 1st July.

1999	11 on 13 th June	2002	16 on 6 th June
2000	19 on 16 th June	2003	19 on 6 th June
2001	8 on 17 th June	2004	28 on 16 th June

Table One : Bagmere sightings of Small Pearl-bordered Fritillary B. selene

Dark Green Fritillary *Argynnis aglaja* (Linnaeus, 1758)

In the last 15 years there have been 30 sightings of this butterfly in Cheshire – all relating to single insects. This pattern was maintained in 2004 with reports of single insects near Walker Barn in the Pennine hills on 22nd July and at Higher Poynton on 8th August. There was also a late report from 2003 of one at Red Rocks Marsh on 17th July.

Speckled Wood *Pararge aegeria* (Linnaeus, 1758)

Unlike several other species there was little evidence during the year to suggest that the Speckled Wood *P. aegeria* suffered through the adverse weather conditions. With sightings from 186 tetrads this butterfly proved to be the second most widespread species in the county, although there were few reports of significant counts – 50+ at Beeston on 6th July being the largest. It is interesting to note that those sites producing the highest number of records in 2004 were from the Pennine foothills to the east of the Macclesfield Canal – areas where this butterfly did not even occur until a few years ago. As the Speckled Wood *P. aegeria* overwinters in two different stages of development the emergence dates of each brood can be staggered over a considerable period, with this being especially apparent in 2004 with virtually no discernible peaks throughout the season. Earliest and latest sightings were both from Greasby on 31st March and 12th October.

Wall *Lasiommata megera* (Linnaeus, 1767)

In recent years the worrying trend has continued with the Wall *Lasiommata megera* becoming the fastest declining butterfly in the U.K. This pattern of falling numbers is mirrored in Cheshire where the largest reductions have been at lowland sites away from the coast. The only remaining areas in the county where this species can be found with any regularity are on the Wirral (5 sites in 2004) and the Pennine foothills (10 sites in 2004) – this latter site also produced the largest count of 6 insects at Tegg's Nose Country Park on 23rd May. Elsewhere there were only scattered sightings (mainly of single insects) at Chester, Hargrave, Tattenhall, Manley, Mouldsworth, Gowy Meadows, Hurleston, Delamere Forest, Holmes Chapel and Mere. First brood butterflies were recorded from 18th May to 13th June and the second emergence from 13th July to 13th September. Earliest sighting at Inner Marsh Farm on 18th May; latest at Chester on 13th September.

Grayling *Hipparchia semele* (Linnaeus, 1758)

It was a poor year for this species with reports from only five coastal sites on the Wirral between Red Rocks and Burton Point, producing a maximum count of 6 butterflies near Thurstaston on 19th July. Disturbance due to railway maintenance work at the inland breeding colony at Sandbach Flashes may have been the reason for a marked reduction in numbers at this site - recorded on only four dates between 29th July and 16th August, with a maximum count of 2 insects on 11th August. Earliest sightings near Thurstaston and West Kirby on 13th July, latest at Sandbach Flashes on 16th August.

Gatekeeper *Pyronia tithonus* (Linnaeus, 1771)

Contributors continue to record ever increasing numbers of this species, especially in the north and east of the county. Indicative of this expansion was in the Pennine foothills at a height of 1,000 feet where 168 were counted at Bakestonedale Moor on 8th August. Significant counts from lowland sites included 637 at Newgate, Wilmslow on 29th July and a site record at Rixton Claypits of 605 on 31st July. Heavy rain throughout most of August meant that numbers fell sharply during the month with very few sightings by early September. Earliest sighting at Inner Marsh Farm on 28th June; latest at Congleton on 19th September.

Meadow Brown *Maniola jurtina* (Linnaeus, 1758)

It was generally a poor year for this butterfly with few significant counts other than good numbers in the early part of the season at Heswall, culminating in a maximum count of 1,000+ on 1st July. At the regularly surveyed transect at Pickering's Pasture the season was described as "disastrous", with similar comments received from several other contributors. Inclement weather conditions in August produced a dramatic fall in numbers throughout the county with the result that at most sites the Meadow Brown *M. jurtina* had almost disappeared by mid-August. Earliest sightings at Greasby on 6th June and Rixton Claypits the following day; latest at Rixton Claypits on 15th September and Adlington on the 18th.

Ringlet *Aphantopus hyperantus* (Linnaeus, 1758)

The Ringlet *A. hyperantus* was one of the few butterflies to prosper in Cheshire during the year with the two colonies along the Wych Valley producing the highest ever counts - 276 at Oldcastle Mill (SJ44S) and 219 at Lower Wych (SJ44X) – both on 2nd July in less than ideal weather conditions. It was also encouraging that

the species was reported from a new site near Lower Threapwood (SJ44M) and also more than 10 miles further east at Audlem (SJ64S). There is a distinct possibility that there could still be further undiscovered sites in the south of Cheshire where the Ringlet *A. hyperantus* has spread over the last few years. Earliest sighting in the Wych Valley on 2nd July; latest near Audlem on 18th July.

Small Heath *Coenonympha pamphilus* (Linnaeus, 1758)

Records were received from 13 sites in the moorland areas bordering the Peak District, 6 sites on the Wirral, plus a further 5 sites scattered across the remainder of the county. In lowland areas the only double-figure count was at Delamere Quarry with a maximum count of 18 on 21st August. The decline of this butterfly in Cheshire is mirrored elsewhere in the country where there has been a 60% decline at monitored sites over the last 25 years. By coincidence, highest counts in Cheshire in 2004 were all in the Pennine hills on 13th June - 60 at Dane Bower, 33 along Cumberland Brook, Wildboarclough and 22 at Oaken Clough. At Arclid Sand Quarry, which lies a considerable distance from any other colonies, there was a single insect on 21st June – the first sighting at this locality since 1998. Earliest sightings at Inner Marsh Farm on 18th May and Bollington the following day; latest at Congleton Edge on 8th September.

3. Moths

Shane Farrell - VC58 County Macromoth Recorder

Steve Hind - VC58 County Micromoth Recorder

As usual, this report is based upon the current records held on the main database for the Cheshire Moth Group, which incorporates data from LCES members and publications, and rECOrd, the County Biological Information System. It covers all areas within Watsonian Vice-county 58 (Cheshire).

Though macromoths and micromoths have been combined in this report, where ‘all species’ counts are given, the numbers of macromoth species are given in brackets to permit comparison with previous years. Largely as a result of researching older publications and record cards, the confirmed macromoth species on our database has increased from 508 in 2003, to 591 in 2004.

It is hoped that the enhanced information presented here will encourage more of us to record the smaller species and Steve Hind will welcome records from people willing to do so. Both Steve Hind (micromoths) and Shane Farrell (macromoths) are willing to receive specimens or photographs from Cheshire for confirmation/identification. Humanely killed specimens can be posted, preferably in a film canister or similar with paper/cotton wool either side to prevent too much damage. Alternatively, they can of course be handed to us in person. Please contact either party direct using the contact details at the end of this report.

Over the last 12 months we have produced updated versions of the 10km square matrices for both macromoths and micromoths. If you have not received a copy of these reports and would like one, then please contact Shane or Steve and we can gladly provide a free copy (preferably, but not exclusively, via email).



In previous years we have commented on the rarer macromoths, generally those species which have been recorded three times or less in that year. This has now been extended to include the micromoths. In addition, we have included species, such as Scarce Footman *Eilema complana* and Barred Hook-tip *Watsonalla cultraria*, which are normally very scarce but had an unusually good year in 2004. A species not included is Buff Footman *Eilema depressa* that has increased dramatically in the last 3 years. There have now been a total of 25 records, with a really spectacular tally of 83 specimens in two hours at Bickerton Hills SJ5257

in 2004 (MD) confirming that this species now appears to be well established in Cheshire.

The report can only cover records for which we have actually received detail, and therefore if your records do not appear here then it is likely that we have not had them and cannot unfortunately report them. There is the possibility that records have been received but not, for some reason, input. This could be a simple error (for which we apologise – yes, we are human and also have full-time jobs!) and if you suspect that this is the case

please contact the person to whom your records were submitted. It is also possible that the records require some form of verification in order to allow the CMG Rarity Panel to accept them. In the latter case we would usually contact the recorder concerned to ask for supporting evidence. In many cases such records will be included in the following year's report – see 3.3 *Additional Species Records Received Since the Last Report and Relating to 2003* below. For many species, formal identification can be achieved without the need to kill the moth concerned. A good quality photograph that depicts adequate detail to allow the diagnostic features to be assessed can often be sufficient. With digital cameras, confirmation can sometimes be obtained the same day by email while the specimen waits in the refrigerator to be released alive.

Details of the macromoth species requiring verification or dissection are listed on the macromoth checklist for the county. This is updated at least annually and contains virtually all the species on the county list. Each species has a code to reflect apparent rarity and any requirement for verification or otherwise. Paper copies can be obtained from Shane Farrell or online at the CMG website at

<http://www.consult-eco.ndirect.co.uk/lrc/cmg/cmg.htm>. Steve Hind will provide confirmation of the micromoths requiring such treatment upon request.

The last five years' records for all moths are summarized below in *Table Two*. It is interesting to note that the 2004 figures appear to confirm a substantial increase in the numbers of moths caught but that the number of records received fell slightly. We also saw more than 400 macromoths recorded in the county for the first time in this five-year period.

Year	Species	Records	Individuals
2000	712 (334)	18,113 (11,904)	47,827 (21,518)
2001	791 (370)	35,604 (19,386)	92,843 (62,131)
2002	789 (382)	29,889 (21,525)	88,287(52,781)
2003	848 (397)	42,541 (31,548)	137,640(104,841)
2004	830 (402)	41,575 (31,651)	163,030 (140,725)

Table Two: Annual summary 2000-2005 of moth records in VC58. (macromoth numbers in brackets).

3.1 The Commonest Species

Twenty three species broke through the 1000+ individuals barrier this year, and for the first time, we include the most common species of micromoth. All of the species below will be familiar to anyone remotely interested in moths and hopefully we can build on this familiarity and increase the recording of the smaller species. Not all of them are smaller than many macromoths of course, and Mother of Pearl *Pleuroptya ruralis* stands out as an obvious example of this. Each of the species for which we recorded more than 1000 individuals in the year is shown below and they are ordered according to the number of individuals recorded with the corresponding numbers for 2003 shown in brackets.

Code	Vernacular	Taxon	Records	Individuals	2003 Position
2107	Large Yellow Underwing	<i>Noctua pronuba</i>	1146 (1048)	39652 (33175)	1
2089	Heart and Dart	<i>Agrotis exclamationis</i>	870 (552)	11508 (4452)	2
2343x	Common Rustic agg.	<i>Mesapamea secalis</i> agg.	609 (466)	9504 (4290)	3
2321	Dark Arches	<i>Apamea monoglypha</i>	846 (484)	8709 (2482)	6
0171	Narrow-bordered Five-spot Burnet	<i>Zygaena lonicerae</i>	25 (23)	4510 (1371)	12
0998	Light Brown Apple Moth	<i>Epiphyas postvittana</i>	710 (608)	4258 (3916)	-
2126	Setaceous Hebrew Character	<i>Xestia c-nigrum</i>	625 (467)	3796 (3162)	4
2190	Hebrew Character	<i>Orthosia gothica</i>	503 (583)	2954 (2645)	5
2187	Common Quaker	<i>Orthosia cerasi</i>	437 (430)	2939 (2457)	7
2111	Lesser Broad-bordered Yellow Underwing	<i>Noctua janthe</i>	362 (262)	2419 (1204)	17

1713	Riband Wave	<i>Idaea aversata</i>	517 (385)	2273 (1428)	11
2109	Lesser Yellow Underwing	<i>Noctua comes</i>	589 (369)	2160 (1206)	16
1304		<i>Agriphila straminella</i>	240 (267)	2108 (2332)	-
0873		<i>Blastobasis lignea</i>	204 (206)	2037 (1288)	-
2188	Clouded Drab	<i>Orthosia incerta</i>	328 (322)	1886 (1442)	10
2293	Marbled Beauty	<i>Cryphia domestica</i>	406 (376)	1537 (1004)	
1293	Garden Grass-veneer	<i>Chrysoteuchia culmella</i>	295 (252)	1482 (1371)	-
1937	Willow Beauty	<i>Peribatodes rhomboidaria</i>	532 (509)	1467 (1203)	-
2098	Flame	<i>Axylia putris</i>	381 (337)	1189 (1359)	14
1305		<i>Agriphila tristella</i>	163 (218)	1125 (1220)	-
2381	Uncertain	<i>Hoplodrina alsines</i>	321 (278)	1124 (1035)	-
1405	Mother of Pearl	<i>Pleuroptya ruralis</i>	292 (271)	1061 (753)	-
1906	Brimstone Moth	<i>Opisthograptis luteolata</i>	463 (474)	1003 (975)	-

Table Three: Summary of all moth species for which records of 1000 or more individuals were received in VC58 in 2004 (2003 figures in brackets)

3.2 Systematic List of Rarer Species in 2004

2004 was a quite incredible year for new species of moth in VC58. We added a total of ten species to the county list of which four were macromoths. This ably demonstrates that even though we live in a county that has one of the most extensively recorded moth fauna in the UK, there are still new county species to be found by dedicated recorders. The species added to the county list this year are summarized in *Table Four* below. Another potential new county moth species caught in 2004 (Little Thorn *Cepphis advenaria*) is yet to be formally confirmed and hopefully we can provide some form of verification of this record and also some of the other rare moths trapped by the same recorder by the time the next report is produced. The full systematic list of rarer species in 2004 follows *Table Four*.

Code	Vernacular	Taxon	Authority	Recorder	10km Square
0113		<i>Stigmella sakhalinella</i>	Puplesis, 1984	Steve Hind and Kevin McCabe	SJ77
0704		<i>Agonopterix scopariella</i>	(Heinemann, 1870)	Mike Dale	SJ85
0813		<i>Scrobipalpa salinella</i>	(Zeller, 1847)	Ian Smith	SJ28
1193		<i>Eucosma tripoliana</i>	(Barrett, 1880)	Ian Smith	SJ28
1292		<i>Calamotropha paludella</i>	(Hübner, 1824)	Marion Barlow and Steve Holmes	SJ47
1408		<i>Palpita vitrealis</i>	(Rossi, 1794)	Barry Shaw	SJ88
1978	Pine Hawk-moth	<i>Hyloicus pinastri</i>	(Linnaeus, 1758)	Sheila Blamire	SJ78
2165	Small Ranunculus	<i>Hecatera dysodea</i>	([Denis & Schiffermüller], 1775)	Graham Jones	SJ38
2252	Large Ranunculus	<i>Polymixis flavicincta</i>	([Denis & Schiffermüller], 1775)	David Cookson	SJ65
2412	Silver Hook	<i>Deltote uncula</i>	(Clerck, 1759)	Liz Bentham and David James	SJ67

Table Four: New species in VC58 in 2004

The above records are clearly of major importance for the county but it is our firmly held belief that recorders will find it useful to know about the other rare moths recorded in the county each season. If not then please tell us!! A brief comment on each species is made below, providing detail on where and when the species were found and by whom. Finer detail may be available upon request.

0003 *Micropterix aureatella* (Scopoli, 1763)

An adult was beaten from an oak *Quercus* sp. branch at Oakhanger Moss SJ7655 on 15-May (SHH).

0004 *Micropterix aruncella* (Scopoli, 1763)

There was a single adult at Etherow Country Park, Compstall SJ9791 on 15-May (SPF). Adults were abundant in the meadow below Disleybank Wood, Disley SJ9684 on 23-May (SHH).

0008 *Eriocrania unimaculella* (Zetterstedt, 1839)

Tenanted larval mines were found on birch *Betula* sp. at Higher Poynton, at Anson Pit SJ9483 on 16-May and at Prince's Wood and Park Pit SJ9384 on 18-May (SHH).

0009 *Eriocrania sparmannella* (Bosc, 1791)

Four adults at Thurstaston Common SJ2484 on 25-Apr (BS)

0020 *Ectoedemia decentella* (Herrich-Schäffer, 1855)

A single adult to MVL at Romiley SJ9390 on 8-June (SPF)

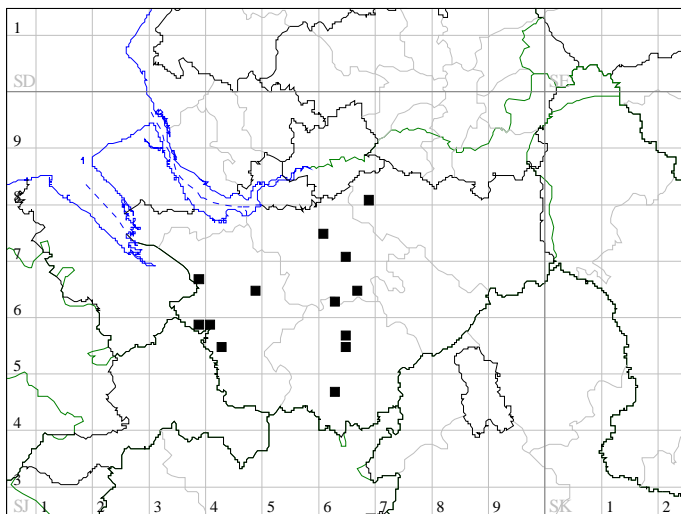
0023 *Ectoedemia argyropeza* (Zeller, 1839)

As there had not been any county records since 1965, an effort was made to locate the species this year. Aspen *Populus tremula* was searched during October in the hope of finding the larval mines. Initial searches in Hazel Grove SJ9386, Poynton SJ9383 and Wilmslow SJ8180, SJ8280, SJ8281 were unsuccessful. Mines were eventually located in St. Wilfred's Churchyard, Davenham SJ6671 on 24-Oct (SHH) and in two areas of Stanney Woods SJ3973, SJ4074 on 30-Oct (SHH, KM).

0025 *Ectoedemia intimella* (Zeller, 1848)

Leaf mines were found on Goat Willow *Salix caprea* at a regular site in Woods Moor SJ9087 on 10-Nov (SHH).

0080 *Stigmella ulmivora*

**0080 *Stigmella ulmivora* (Fologne, 1860)**

This species appears to be restricted to West Cheshire, with our most eastern record coming from Arley Green SJ6880 (see map). Two records of vacated leaf mines this year, at Churton SJ4355 on 12-Sept (SHH) and Hockenhull SJ4865 on 18-Sept (SH, KM).

0082 *Stigmella paradoxa* (Frey, 1858)

Leaf mines were located along the Middlewood Way, Hazel Grove SJ9485 & SJ9486 on 31-July (SHH). This site is well away from our other known sites in SJ54, 55, 64 & 66. A certain amount of shrub plantings were carried out some fifteen or so years ago on this disused railway track, so there is the possibility that the moths may have been introduced to the site at this time.

0090 *Stigmella tiliae* (Frey, 1856)

A colony of 25 leaf mines was found on Common Lime *Tilia x vulgaris* at Marbury Country Park SJ6576 on 3-Oct (AW). This record extends the distribution up the Weaver Valley by a further ten miles.

0097 Apple Pygmy *Stigmella malella* (Stainton, 1854)

This species appears to be locally scarce in the county. Vacated leaf mines were found in ancient roadside hedgerows containing Crab Apple *Malus sylvestris* at Gawsworth SJ9069 on 11-Sept and Eaton SJ8666 and Gawsworth SJ8667 on 23-Oct (SHH).

0113 *Stigmella sakhalinella* Puplesis, 1984

**The first county record is of two larval mines on birch *Betula* sp. one tenanted, the other aborted, at the corner of Middle Walk, Knutsford SJ7578 on 4-Oct (SHH, KM).

0114 *Stigmella glutinosae* (Stainton, 1858)

Vacated mines at Hough Common SJ7150 on 9-Sept (SHH) and Dairyhouse Wood, Adlington SJ8981 on 23-Oct (BTS).

0128 *Phylloporia bistrigella* (Haworth, 1828)

A vacated mine at Nelson Pit, Higher Poynton SJ9483 on 1-Sept (SHH).

0129 *Incurvaria pectinea* Haworth, 1828

Vacated blotch mines along the edge of Long Highlees Wood, Nether Alderley SJ8775 on 7-Oct and Tidnock Wood, Gawsworth SJ8669 on 10-Oct (SHH).

0141 *Nematopogon schwarziellus* (Zeller, 1839)

A single adult to MVL at Higher Poynton SJ9483 on 4-June (SHH) was the only record this year.

0157 *Heliozela hammoniella* (Sorhagen, 1885)

Vacated leaf mines along the Tame Valley, Mossley SD9701 on 19-Sept (SHH), the Goyt Valley, Furness Vale SK0083 on 3-Oct (SHH) and Bradford Farm Lodge Wood, Alderley Edge SJ8577 on 26-Oct (SHH,BTS).

0175 *Narycia monilifera* (Geoffroy, 1785)

Three larval records from tree trunks, off Oak sp. *Quercus* sp. at Lyme Park SJ9684 on 17-Mar (PJF), off Sycamore *Acer pseudoplatanus* at Roman Lakes, Marple SJ9687 on 9-Apr and bred from Moss Nook, Ringway SJ8385 on 14-Apr (IFS).

0179 Lichen Case-bearer *Dahlica lichenella* (Linnaeus, 1761)

At least 30 cases were on the wall at Denhall Lane, Burton SJ3074 on 5-Mar (SPF, PJF) and 7-Mar (IFS). 50 cases and pupal exuviae on a lichen encrusted wooden fence post at Goyt Hall SJ9290 on 25-Apr (SPF) and 28-Apr (IFS). Larvae appeared fully-grown when this latter site was next visited on 23-Sept (IFS) and by 9-Oct at least one larva was noted to be still actively feeding on lichens (SPF).

0181 *Taleporia tubulosa* (Retzius, 1783)

An old larval case at Brereton Heath SJ7965 on 28-Aug (SHH, AW) and another at Little Budworth Common SJ5965 on 9-Oct (AW) were the only records this year.

0185 *Luffia ferchaultella* (Stephens, 1850)

At least 50 cases on the wall at Denhall Lane, Burton SJ3074 on 5-Mar (SPF, PJF) and ten old cases on a Sycamore *Acer pseudoplatanus* trunk at Brabyns Park, Marple SJ9689 on 8-Mar (IFS).

0186 *Psyche casta* (Pallas, 1767)

Cases present at Wybunbury Moss SJ6950 on 6-June (SHH, AW).

0200 *Psychoides filicivora* (Meyrick, 1937)

Adults bred from larvae in Polypody *Polypodium vulgare* that was growing on a wall at Long Rake Farm, West Kirby SJ2387 on 26-Dec (IFS).

0227 Skin Moth *Monopis laevigella* ([Denis & Schiffermüller], 1775)

Single adults netted during the day at Danes Moss SJ9070 on 30-May (SHH) and at Brereton Heath SJ7964 on 28-Aug (SHH, AW).

0264 *Bedellia somnulentella* (Zeller, 1847)

There must have been a widespread irruption of this species across the Cheshire Plain during August, resulting in reports of larvae and pupae from eighty sites between 1-Sept and 13-Oct. The only previous irruption was in 1998, when there was a similar spread of records.

0266 *Bucculatrix nigricomella* (Zeller, 1839)

Vacated mines were scarce on small leaves of Ox-eye Daisy *Leucanthemum vulgare* at Jacksons Brickworks, Higher Poynton SJ9484 on 23-Apr (SHH). A single adult to MVL at Heald Green SJ8586 on 31-May (BTS).

0267 *Bucculatrix maritima* Stainton, 1851

Adults bred from ova on Sea Aster *Aster tripolium*, at Heswall Shore SJ2580 on 6-Sept-2003 (IFS).

0274 *Bucculatrix ulmella* Zeller, 1848

Vacated mines at Hockenhull SJ4865 on 18-Sept (SHH, KM) were the only records this year.

0285 *Azalea Leaf Miner Caloptilia azaleella* (Brants, 1913)

A single adult to MVL at Bramhall SJ887842 on 8-Aug (ACh).

0287 *Caloptilia robustella* Jäckh, 1972

Adults to MVL at Alsager SJ8154 on 1 & 21-June (MD) and Wilmslow SJ8681 during 2004 (AMB).

0297 *Eucalybites auroguttella* (Stephens, 1835)

Mines at Chorlton SJ7251 on 9-Sept (SHH).

0332 *Phyllonorycter corylifoliella* (Hübner, 1796)

Mines on Hawthorn *Crataegus monogyna* at Cheadle Bridge SJ8589 on 18-Sept (BTS), by the canal towpath at Mossley SD9701 on 19-Sept (SHH) and at Thornton-le-Moors SJ4474 on 4-Dec (MB, SH). The mines of this species are becoming far more difficult to find since the spread of the similar and now often abundant *P. leucographella*.

0354 *Phyllonorycter emberizaepenella* (Bouché, 1834)

Vacated mines on Snowberry *Symphoricarpos rivularis* at Brereton Heath SJ7965 on 28-Aug (SHH, AW). Adults reared from leaf mines on Snowberry *S. rivularis* at Hazel Grove SJ9386 on 17-Oct and Woods Moor SJ9086 on 11-Nov (SHH).

0361 *Phyllonorycter trifasciella* (Haworth, 1828)

Adults reared from leaf mines on Honeysuckle *Lonicera periclymenum* at Stanney Woods SJ3974 on 30-Oct (SHH, KM).

0371 Lunar Hornet Moth *Sesia bembeciformis* (Hübner, 1806)

The sole known colony of this species at Greasby, Wirral SJ2587 seems to be still strong and healthy. LH has made several observations this year with four pupal cases found on 19-Jun, and a freshly emerged male at 10.30am on 22-Jun. He also watched a female egg-laying on the underside of a willow *Salix sp.* leaf at 3.30pm on 1-Jul. After she finished laying he looked on the leaf and found 5 eggs.

0373 Currant Clearwing *Synanthedon tipuliformis* (Clerck, 1759)

Unlike the above species, Currant Clearwing *S. tipuliformis* can be realistically expected wherever mature currant *Ribes sp.* bushes are growing. There were two records this year with six specimens at Winstanley Road Allotments SJ7992 on 16-Jun (PBH) and a single adult at Marple Tip SJ9488 on 19-Jun (SPF). In both of these cases, the moths were found by searching rather than with a lure.

0396 *Glyphipterix fuscoviridella* (Haworth, 1828)

A single adult to MVL at Elton SJ4575 on 9-June (MB, SH).

0401 *Argyresthia laevigatella* (Heydenreich, 1851)

Two adults to MVL at Higher Poynton SJ9483 on 4 & 5-June (SHH).

0414 *Argyresthia curvella* (Linnaeus, 1761)

A single adult to MVL at Heald Green SJ8586 on 7-June (BTS).

0419 *Argyresthia semifusca* (Haworth, 1828)

An adult to MVL at Alsager SJ8154 on 2-Aug (MD) was our only record this year.

0420 Cherry Fruit Moth *Argyresthia pruniella* (Clerck, 1759)

Single adults to MVL at Heald Green SJ8586 on 29-June & 7-Aug (BTS) and Romiley SJ9390 on 31-July (SPF).

0437 *Swammerdamia caesiella* (Hübner, 1796)

Both vacated and occupied larval spinnings were very common at Little Budworth Common SJ5865 on 9-Oct. Virtually every scrub birch around the edge of the heath seemed to have a spinning on it (AW). There were also vacated larval spinnings at Marton Heath SJ8669 the following day (SHH).

0447 *Roeslerstammia erxebella* (Fabricius, 1787)

Singles to MVL at Alsager SJ8154 on 10-May & 29-July (MD). Our only previous records were from a site along the Bollin Valley, Macclesfield, where a colony was discovered in 2002 (RB).

0452 *Ypsolopha nemorella* (Linnaeus, 1758)

A single adult to MVL at Higher Poynton SJ9483 on 8-Aug (SHH).

0458 *Ypsolopha alpella* ([Denis & Schiffermüller], 1775)

Single adults to MVL at Romiley SJ9390 on 8-Aug (SPF) and Elton SJ4575 on 4-Sept (MB, SH).

0470 *Orthotelia sparganella* (Thunberg, 1788)

A single adult to MVL at Lodge Plantation, Runcorn SJ5583 on 6-Jul (JJC)

0490 *Coleophora lutipennella* (Zeller, 1838)

Adults to MVL at Heald Green SJ8586. A male on 22-Jul, followed by a female four days later (BTS).

0494 *Coleophora coracipennella* (Hübner, 1796)

A male to MVL at Higher Poynton SJ9483 on 11-Jul, followed by three adults on 14-July (SHH).

0518 *Coleophora mayrella* (Hübner, 1813)

An adult to MVL at Romiley SJ9390 on 14-June (SPF).

0522 *Coleophora lineolea* (Haworth, 1828)

Larval cases on Black Horehound *Ballota nigra*, at Heswall shore SJ2580 on 11-May and Ness Quay SJ2875 on 8-June (IFS).

0533 Pistol Case-bearer *Coleophora anatipennella* (Hübner, 1796)

A larval case on Blackthorn *Prunus spinosa*, near Crewe SJ6958 on 26-Sept (SHH) and signs of larval feeding on the same day at Anderton Nature Park SJ6475 (AW) and again along the edge of Stanney Woods SJ4074 on 30-Oct (SHH, KM).

0544 *Coleophora albicosta* (Haworth, 1828)

An adult disturbed from Gorse *Ulex europaeus*, at Jepsonclough Farm, Adlington SJ9380 on 2-June (SHH).

0562 *Coleophora asteris* Mühlig, 1864

Adults bred from larvae on Sea Aster *Aster tripolium*, at Heswall Shore SJ2580 on 6-Sept-2003 (IFS).

0564 *Coleophora obscenella* Herrich-Schäffer, 1855

Larvae on Sea Aster *Aster tripolium*, at Heswall Shore SJ2580 on 6-Sept-2003 (IFS).

0581 *Coleophora taeniipennella* Herrich-Schäffer, 1855

A male was flushed from marshy ground at Jepsonclough Farm, Adlington SJ9380 on 25-June (SHH). This is the first sighting of an adult in Cheshire. The species was only added to the county list last year, following the discovery of larval cases at a number of sites during the autumn.

0582 *Coleophora glaucicolella* Wood, 1892

A male to MVL at Jacksons Brickworks, Higher Poynton SJ9484 on 11-June (SHH et al). A female was flushed from marshy ground at Jepsonclough Farm, Adlington SJ9380 on 25-June (SHH) and another female to MVL at Murdishaw Wood, Runcorn SJ5680 on 13-July (SHH et al).

0583 *Coleophora tamesis* Waters, 1929

A female to MVL at Murdishaw Wood, Runcorn SJ5680 on 13-July (SHH et al).

0597 *Elachista atricomella* Stainton, 1849

A single adult to MVL at Frodsham Marsh SJ5179 on 31-July (MD) was our only record this year.

0598 *Elachista kilmunella* Stainton, 1849

An adult was netted at Wybunbury Moss SJ6950 on 6-June (SHH, AW).

0602 *Elachista apicipunctella* Stainton, 1849

A single adult to MVL at Higher Poynton SJ9483 on 5-June (SHH).

0608 *Elachista rufocinerea* (Haworth, 1828)

Only three records of this widespread and often abundant species. An adult netted at around 2000 hours at Jacksons Brickworks, Higher Poynton SJ9484 on 23-Apr (SHH). Two adults at Morley Green SJ8282 on 12-May (BTS) and an adult at Anson Road, Higher Poynton SJ9483 on 16-May (SHH).

0609 *Elachista maculicerusella* Bruand, 1859

A single adult to MVL at Heald Green SJ8586 on 31-May (BTS).

0610 *Elachista argentella* (Clerck, 1759)

This common species was only recorded from Romiley SJ9390, with singles to MVL on 10-June & 28-July (SPF).

0621 *Elachista subalbidella* Schläger, 1847

A single adult at Danes Moss SJ9070 on 22-May, followed by three at the same site on 30-May (SHH). These are the first records since four at Saltersley Moss SJ8280 on 27-May-1997.

0631 *Cosmiotes freyerella* (Hübner, 1825)

A single adult at Danes Moss SJ9070 on 22-May (SHH).

0642 *Batia unitella* (Hübner, 1796)

Single adults to MVL at Heald Green SJ8586 on 7-June (BTS) and Alsager SJ8154 on 11-Aug (MD).

0654 *Pleurota bicostella* (Clerck, 1759)

Four adults at Danes Moss SJ9070 on 22-May, followed by 24 at the same site on 30-May (SHH). Four adults at Wybunbury Moss SJ6950 on 6-June (SHH, AW).

0656 *Tachystola acroxantha* (Meyrick, 1885)

As well as the usual frequency of records from the urban and suburban parts of North East Cheshire, adults were also attracted to an actinic light at Frodsham SJ5277 on 15 & 29-May and 4-Aug (RGB) (see map).

0670 *Depressaria daucella* ([Denis & Schiffermüller], 1775)

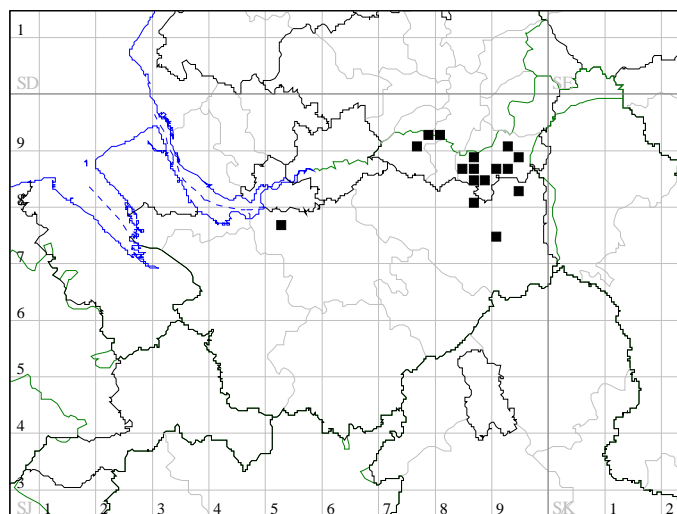
Two records of larvae on Water Dropwort *Oenanthe* sp., at Heswall Shore SJ2580 on 11-May (IFS) and very common at Inner Marsh Farm, Burton SJ3073 on 16-June, feeding on the flower heads (HD).

0671 *Depressaria ultimella* Stainton, 1849

Larvae in the stems of Fool's Water-cress *Apium nodiflorum* at Ness SJ2975 on 6-July (IFS). This is only the fourth county record and the first since 1953.

0696 *Agonopterix propinquella* (Treitschke, 1835)

A single female to MVL at Heald Green SJ8586 on 5-June (BTS).

0656 *Tachystola acroxantha*

0702 *Agonopterix assimilella* (Treitschke, 1832)

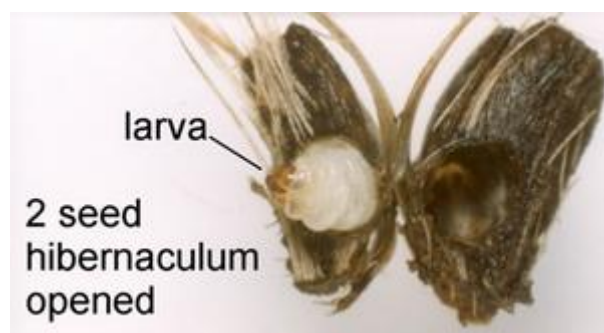
Larvae in the spun twigs of Broom *Sarothamnus scoparius* at Brink Quarry, Walker Barn SJ9573 on 24-Apr (SHH) and an adult to MVL at Alsager SJ8154 on 23-Aug (MD).

0704 *Agonopterix scopariella* (Heinemann, 1870)

**The first county record, with four adults to MVL at Alsager SJ8154, consisting of males on 23 & 28-Aug and both male and female on 2-Sep (MD).

0710 *Agonopterix conterminella* (Zeller, 1839)

A single adult to MVL at Higher Poynton SJ9483 on 14-Aug (SHH).

**0724 *Metzneria lappella* (Linnaeus, 1758)**

Larvae were present in hibernacula in seedheads of Lesser Burdock *Arctium minus* at Job's Ferry, Eastham SJ3682 on 20-Jan (IFS). Single adults to MVL at Heald Green SJ8586 on 29-June & 14-Aug (BTS).

0746 *Chrysoesthia drurella* (Fabricius, 1775)

Tenanted leaf mines at Redhouse Farm, Dunham SJ7389 on 30-Aug (BS), Croughton SJ4172 on 5-Sept and at Bradley Green SJ5045 on 15-Sept (SHH).

0747 *Chrysoesthia sexguttella* (Thunberg, 1794)

Adults bred from larvae in the leaves of Orache sp. *Atriplex* sp. at Heswall Shore SJ2580 on 11-May (IFS). Tenanted leaf mines at Chorlton SJ7251 on 9-Sept (SHH) and leaf mines at Davenport SJ8987 on 18-Sept and High Grove Farm, Heald Green SJ8587 on 23-Sept (BTS).

0752 *Aristotelia ericinella* (Zeller, 1839)

A single adult at Thurstaston Common SJ2484 on 18-Jul (BS)

0755 *Stenolechia gemmella* (Linnaeus, 1758)

Single adults to MVL at Bramhall SJ887842 on 14-Aug (ACh) and Heald Green SJ8586 on 21-Sept (BTS).

0762 *Athrips mouffetella* (Linnaeus, 1758)

Adults to MVL at Heald Green SJ8586 on 29-June (BTS) and Higher Poynton SJ9483 on 7-Aug (SHH).

0765 *Teleiodes vulgella* ([Denis & Schiffermüller], 1775)

Single adults to MVL at Higher Poynton SJ9483 on 25-June (SHH) and Murdishaw Wood, Runcorn SJ5680 on 13-July (SHH et al).

0770 *Carpatolechia proximella* (Hübner, 1796)

Three adults amongst Birch *Betula* sp. at Danes Moss SJ9070 on 30-May (SHH).

0772 *Carpatolechia fugitivella* (Zeller, 1839)

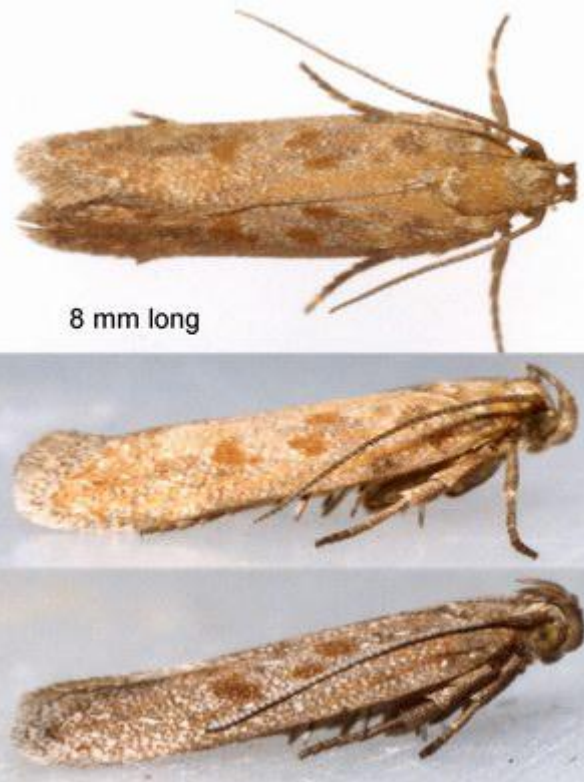
Two adults to MVL at Murdishaw Wood, Runcorn SJ5680 on 13-July (SHH et al).

0774 *Teleiodes luculella* (Hübner, 1813)

A single adult to MVL at Heald Green SJ8586 on 6-June (BTS).

0813 *Scrobipalpa salinella* (Zeller, 1847)

**The first county record, with adults bred from larvae found on Glasswort *Salicornia*, Sea-blite *Suaeda maritima* and Sea Aster *Aster tripolium* at Heswall shore SJ2580 on 11-May (IFS).



0822 *Scrobipalpa acuminatella* (Sircom, 1850)

A single adult to MVL at Heald Green SJ8586 on 24-Apr (BTS) and tenanted leaf mines in Spear Thistle *Cirsium vulgare* at Dee Cop, Cheater SJ3966 on 5-Oct (IFS).

0878 *Batrachedra praeangusta* (Hawthorn, 1828)

An adult to MVL at Romiley SJ9390 on 4-Aug (SPF).

0885 *Mompha conturbatella* (Hübner, 1819)

Larvae at Danes Moss SJ9070 on 22-May (SHH).

0888 *Mompha propinquella* (Stainton, 1851)

A single adult to MVL at Higher Poynton SJ9483 on 6-Aug (SHH).

0891 *Mompha sturnipennella* (Treitschke, 1833)

A single larval gall in the stem of Rosebay Willowherb *Chamerion angustifolium* at Marbury Country Park SJ6576 on 9-Oct (AW) follows on from the first county record in Adrian's garden at nearby Anderton in 2002.

0925 *Phtheochroa rugosana* (Hübner, 1799)

Two adults to MVL at Elton SJ4575 on 17-May & 19-June (MB, SH).

**0956 *Cochylidia implicitana* (Wocke, 1856)**

A single adult to MVL at Romiley SJ9390 on 15-Aug (SPF) was the first record away from its stronghold at the Witton Flashes, Northwich.

0938 *Agapeta zoegana* (Linnaeus, 1767)

An adult to MVL at Murdishaw Wood, Runcorn SJ5680 on 13-July (SHH et al).

0945 *Aethes cnicana* (Westwood, 1854)

An adult was netted at Jepsonclough Farm, Adlington SJ9380 on 25-June (SHH).

0951 *Aethes beatricella* (Walsingham, 1898)

A single adult to MVL at Heald Green SJ8586 on 2-Aug (BTS) was only the third county record. The

previous two were at Halton on 12-Jul-1986 (SJM) and Elton on 14-8-2001 (MB, SH).

0954 *Eupoecilia angustana* (Hübner, 1799)

Three adults to MVL at Higher Poynton SJ9483 on 8-Aug (SHH).

0964 *Cochylis dubitana* (Hübner, 1799)

Only two records of adults this year; both to MVL, at Romiley SJ9390 on 21-June (SPF) and Wilmslow SJ8681 during 2004 (AMB).

0968 *Cochylis nana* (Haworth, 1811)

An adult at Danes Moss SJ9070 on 30-May (SHH).

1000 *Ptycholoma lecheana* (Linnaeus, 1758)

A single adult to MVL at Heald Green SJ8586 on 7-June (BTS).

1008 *Philedone gerningana* (Denis & Schiffermüller, 1775)

Adults bred from larvae on Wood Sage *Teucrium scorodonia* at Tegg's Nose, Macclesfield SJ9472 on 30-May (IFS). This is only the second county record in the past 50 years.

1009 *Philedonides lunana* (Thunberg, 1784)

An adult flushed from Heather *Calluna vulgaris* at Yarnshaw Hill, Wildboarclough SJ9870 on 24-Apr (SHH).

1014 *Isotrias rectifasciana* (Haworth, 1811)

Adults were flushed from hedgerows at Jepsonclough Farm, Adlington SJ9380 on 2-June and at Lyme Handley SJ9582 on 27-June (SHH).

1015 *Eulia ministrana* (Linnaeus, 1758)

Adults at Warrington Common SJ7469 on 17-May (BTS) and at Danes Moss SJ9070 on 22-May and 2 on 30-May (SHH).

1020 *Grey Tortrix Cnephasia stephensiana* (Doubleday, 1849)

Single adults to MVL at Heald Green SJ8586 on 27 & 28-June (BTS).

1029 *Eana osseana* (Scopoli, 1763)

Adults to MVL at Romiley SJ9390 on 4 & 8-June (SPF).

1032 *Aleimma loeflingiana* (Linnaeus, 1758)

An adult emerged 10-June, bred from larva on oak *Quercus* sp. at Thurstaston Common SJ2484 on 16-May (BS). A single adult to MVL at Heald Green SJ8586 on 7-July (BTS).

1044 *Acleris ferrugana* ([Denis & Schiffermüller], 1775)

Adults to MVL at Higher Poynton SJ9483 on 11-Apr (SHH), Heald Green SJ8586 on 30-June (BTS), Murdishaw Wood, Runcorn SJ5680 on 13-July (SHH et al) and Alsager SJ8154 on 18-Dec (MD).

1062 *Acleris emargana* (Fabricius, 1775)

Adults at Jepsonclough Farm, Adlington SJ9380 on 7-Aug, Henbury SJ8773 on 13-Aug and to MVL at Higher Poynton SJ9483 on 27-Aug (SHH).

1073 *Olethreutes schulziana* (Fabricius, 1777)

An adult at Abbots Moss SJ5868 on 31-Aug (PB).

1086 *Hedya salicella* (Linnaeus, 1758)

An adult to MVL at Fodens Flash, Moston SJ7261 on 24-July (MD).

1087 *Orthotaenia undulana* ([Denis & Schiffermüller], 1775)

Three adults at Wybunbury Moss SJ6950 on 6-June (SHH, AW) and one to MVL at Higher Poynton SJ9483 on 26-June (SHH).

1092 *Apotomis turbidana* (Hübner, 1825)

An adult to MVL at Alsager SJ8154 on 27-June (MD).

1097 *Endothenia gentianaena* (Hübner, 1799)

Larvae found in Teasel *Dipsacus fullonum* seedheads at Anderton Nature Park SJ6475 & SJ6575 and Northwich SJ6574 on 24-Jan (AW).

1099 *Endothenia marginana* (Haworth, 1811)

An adult male to MVL at Frodsham Marsh SJ5179 on 31-July (MD).

1109 *Lobesia littoralis* (Humphreys & Westwood, 1845)

An adult to MVL at Romiley SJ9390 on 6-Sept (SPF).

1118 *Ancylis uncella* ([Denis & Schiffermüller], 1775)

A male at Danes Moss SJ9070 on 30-May (SHH).

1120 *Ancylis mitterbacheriana* ([Denis & Schiffermüller], 1775)

Larvae at Tidnock Wood, Gawsworth SJ8669 on 10-Oct (SHH).

1132 *Epinotia subocellana* (Donovan, 1806)

A single adult at Danes Moss SJ9070 on 22-May (SHH).

1137 *Epinotia tetraquetra* (Haworth, 1811)

An adult at Danes Moss SJ9070 on 30-May (SHH).

1150 *Epinotia abbreviana* (Fabricius, 1794)

The distinctive larval feeding damage to Elm *Ulmus* leaves was seen at Croughton SJ4172 on 5-Sept and at Whatcroft SJ6770 on 24-Oct (SHH).

1155 *Epinotia brunnichana* (Linnaeus, 1767)

Adults to MVL at Higher Poynton SJ9483 on 16-July (SHH) and the entrance to Elmerhurst Wood, Lyme Park SJ9684 on 30-July (SPF, PJF).

1162 *Rhopobota myrtillana* (Humphreys & Westwood, 1845)

At least 30 adults amongst Bilberry *Vaccinium myrtillus* at Danes Moss SJ9070 on 22-May, with two still present on 30-May (SHH).

1163 *Zeiraphera ratzeburgiana* (Ratzeburgh, 1840) Spruce Bud Moth

A single adult to MVL at Higher Poynton SJ9483 on 13-July (SHH).

1166 Larch Tortrix *Zeiraphera griseana* (Hübner, 1799)

Adults to MVL at Romiley SJ9390 on 14-July (SPF) and the entrance to Elmerhurst Wood, Lyme Park SJ9684 on 30-July (SPF, PJF).

1168 *Gypsonoma sociana* (Haworth, 1811)

An adult to MVL at Elton SJ4575 on 7-July (MB, SH).

1176 *Epiblema trimaculana* (Haworth, 1811)

An adult to MVL at Higher Poynton SJ9483 on 26-June (SHH) was the only record this year.

1178 *Epiblema roborana* ([Denis & Schiffermüller], 1775)

Adults to MVL at Murdishaw Wood, Runcorn SJ5680 on 13-July (SHH et al), Higher Poynton SJ9483 on 16-July (SHH) and Alsager SJ8154 on 19-July (MD).

1183 *Epiblema foenella* (Linnaeus, 1758)

Adults to MVL at Marbury Number One Tank SJ6675 on 23-Jul (PMH et al), Fodens Flash, Moston SJ7261 on 24-July (MD) and Elton SJ4575 on 27-July (MB, SH).

1193 *Eucosma tripoliana* (Barrett, 1880)

**The first county record, with adults bred from the many larvae in the seedheads of Sea Aster *Aster tripolium*, at Heswall shore SJ2580 on 6-Sept-2003 (IFS).

1202 *Eucosma obumbratana* (Lienig & Zeller, 1846)

Two adults to MVL at Frodsham Marsh SJ5179 on 31-Jul (MD) and larvae in Perennial Sow-thistle *Sonchus arvensis* seedheads at Red Rocks, Hoylake SJ2088 on 22-Aug and Gunsite, Wallasey SJ2792 on 1-Sept (IFS). There are only two previous county records in the past 50 years.

1207 Pine Leaf-mining Moth *Clavigesta purdevi* (Durrant, 1911)

Adults to MVL at Alsager SJ8154 on 21-July (MD) and at Heald Green SJ8586 on 10-Aug (BTS)

1210 Pine Shoot Moth *Rhyacionia buoliana* ([Denis & Schiffermüller], 1775)

An adult to MVL at Elton SJ4575 on 15-July (MB, SH).

1216 Cherry Bark Moth *Enarmonia formosana* (Scopoli, 1763)

Adults to MVL at Romiley SJ9390 on 8-June (SPF), Heald Green SJ8586 on 14-June (BTS) and Wilmslow SJ8681 during 2004 (AMB).

1219 *Lathronympha strigana* (Fabricius, 1775)

Two second brood adults disturbed from St. John's Wort *Hypericum* sp. at Chorlton SJ7251 on 9-Sept (SHH).

1239 Fruitlet Mining Tortrix *Pammene rhediella* (Clerck, 1759)

A dead male in a horse trough at Taylors Lane, near Oakhanger Moss SJ7655 on 15-May (SHH).

1241 *Grapholita compositella* (Fabricius, 1775)

An adult along the Middlewood Way, Hazel Grove SJ9486 on 31-July (SHH).

1245 *Grapholita janthinana* (Duponchel, 1835)

Larvae at Lea-by-Backford SJ3872 on 24-Sept (BTS) and at Furness Vale SK0183 on 3-Oct (SHH).

1252 *Grapholita lunulana* ([Denis & Schiffermüller], 1775)

Several were flying around vetches at Anderton Nature Park, Northwich SJ6575 on 16-May (AW).

1274 *Dichrorampha alpinana* (Treitschke, 1830)

A single adult to MVL at Higher Poynton SJ9483 on 8-Aug (SHH).

1290 *Chilo phragmitella* (Hübner, 1805)

Two adults to MVL at Marbury Number One Tank SJ6675 on 23-Jul (PMH et al)



(MB, SH) and to actinic light at Sale SJ7992 on 21-July (PBH).

1336 *Eudonia pallida* (Curtis, 1827)

An adult to MVL at Elton SJ4575 on 27-July (MB, SH).

1392 *Udea olivalis* ([Denis & Schiffermüller], 1775)

An adult to MVL at Elton SJ4575 on 22-July (MB, SH).

**1292 *Calamotropha paludella* (Hübner, 1824)**

**The first county record is of an adult to MVL at Elton SJ4575 on 5-Aug (MB, SH). This species is currently spreading northwards and this capture coincides with the first Lancashire record, which was caught two days later.

1307 *Agriphila latistria* (Haworth, 1811)

Only recorded from Alsager SJ8154 with single adults on 10 & 11-Aug (MD).

1309 *Agriphila geniculea* (Haworth, 1811)

Adults to MVL at Heald Green SJ8586 on 7-July (BTS) and to actinic light at Frodsham SJ5277 on 20-Aug (RGB).

1329 *Donacaula forficella* (Thunberg, 1794)

Single adults to MVL at Elton SJ4575 on 9-June

1408 *Palpita vitrealis* (Rossi, 1794)

****The first county record** is of an adult to MVL at Heald Green SJ8586 on 7-July (BTS) and follows the first Lancashire record at Flixton (VC59) on 16-Oct-2001 (KM).

1442 *Pempelia palumbella* ([Denis & Schiffermüller], 1775)

An adult to actinic light at Thurstaston Common SJ2484 on 11-Jul (HD), at a site at which it was last recorded in 1948.

1451 *Pyla fusca* (Haworth, 1811)

An adult to MVL at Birkenhead SJ3286 on 4-Aug (GJ).

1470 *Euzophera pinguis* (Haworth, 1811)

Three adults to MVL, two at Elton SJ4575 on 11-Aug (MB, SH) and one at Heald Green SJ8586 on 18-Aug (BTS).

1483 *Phycitodes binaevella* (Hübner, 1813)

Single adults to MVL at Elton SJ4575 on 15-Jul & 14-Aug (MB, SH) and at Alsager SJ8154 on 23-July (MD).

1484 *Phycitodes saxicola* (Vaughan, 1870)

Single adults to MVL at Romiley SJ9390 on 26 & 27-July (SPF).

1508 *Stenoptilia bipunctidactyla* (Scopoli, 1763)

A single adult at Jepsonclough Farm, Adlington SJ9380 on 25-June (SHH).

1513 White Plume Moth *Pterophorus pentadactyla* (Linnaeus, 1758)

An adult to MVL at Murdishaw Wood, Runcorn SJ5680 on 13-July (DE, PH).

1517 *Adaina microdactyla* (Hübner, 1813)

Larvae occupied the stems of Hemp Agrimony *Eupatorium cannabinum* at Red Rocks, Hoylake SJ2088 on 22-Aug (IFS).

1520 *Hellinsia osteodactylus* (Zeller, 1841)

An adult to MVL at Elton SJ4575 on 10-July (MB, SH).

1523 *Oidaematophorus lithodactyla* (Treitschke, 1833)

Larvae on Common Fleabane *Pulicaria dysenterica* at Jepsonclough Farm, Adlington SJ9380 on 2-June, followed by 15 adults on 28-July (SHH).

1637 Oak Eggar *Lasiocampa quercus* (Linnaeus, 1758)

The only record this year was of a larva on heath at Thurstaston Common SJ2484 on 16-May (BS).

1637 Northern Eggar *Lasiocampa quercus* f. *callunae* Palmer, 1847

A single adult was attracted to MVL at Thurstaston Common SJ2484 on 2-Aug (DH)

1643 Emperor *Saturnia pavonia* (Linnaeus, 1758)

Two larvae were found feeding on heather *Erica* spp. At Thurstaston Common SJ2484 on 11-Jul (HD). These were reared at home and pupated on 22-Jul.

1647 Barred Hook-tip *Watsonalla cultraria* (Fabricius, 1775)

After the first county records in 2003, we received an amazing further five records in 2004! Three of these were from the same site at Mere SJ7381 with singles to MVL on 14-May, 28-Jul and 2-Aug (SBI). The others were at Alvanley SJ5073 to actinic on 29-Jul (AJ, TE) and to MVL at Marbury Country Park SJ6576 on 7-Aug (LB), again both were single adults.

1667 Blotched Emerald *Comibaena bajularia* ([Denis & Schiffermüller], 1775)

There was just a single record of this moth to MVL at Alsager SJ8154 on 16-Jun (MD).

1677 Birch Mocha *Cyclophora albipunctata* (Hufnagel, 1767)

The productive garden in the south of the county was the only site for this species. There was a single adult to MVL at Alsager SJ8154 on 6-Jun (MD).

1705 Dwarf Cream Wave *Idaea fuscovenosa* (Goeze, 1781)

There were two records of this moth with single adults at Bromborough SJ3479 on 6-Jul to MVL (ES) and at Elton SJ4575 also to MVL on 29-Jul (MB, SH).

1709 Satin Wave *Idaea subsericeata* (Haworth, 1809)

Just a single specimen recorded at MVL on Thurstaston Common SJ2484 on 30-Jun (DH).



1715 Plain Wave *Idaea straminata* (Borkhausen, 1794)

Plain Wave *I. straminata* is a species which requires dissection for new sites. The following records must be considered unverified as they were not subjected to confirmation. There were adults at MVL at Cheadle Hulme SJ8786 on 26-Jun (GL) where there have been previous records and Thurstaston Common SJ2484 on 13-Jul (DH).

1716 Vestal *Rhodometra sacraria* (Linnaeus, 1767)

The first ever specimen recorded at Heald Green SJ8586 came to MVL on 10-Aug (BTS). The only other record received this year was taken at Marbury Country Park SJ6576 on 16-Sep also to MVL (LB,DJ).

1719 Oblique Carpet *Orthonama vittata* (Borkhausen, 1794)

The only record was at Thurstaston Common SJ2484 of a single adult to MVL on 8-Jun (DH).

1724 Red Twin-spot Carpet *Xanthorhoe spadicearia* ([Denis & Schiffermüller], 1775)

There were two records of this species in 2004. They were both to MVL at Bromborough SJ3479 on 28-May and 7-Aug (ES). A recent paper by Colin Plant (*pers. comm.*) discusses the potential confusion with Dark-barred Twin-spot Carpet *X. ferrugata*, an extract from which follows. Recorders should be aware of this comment and if possible specimens should be retained for the time being until we can establish the likelihood of confusable specimens occurring in our county.

SEPARATION OF RED TWIN-SPOT AND DARK-BARRED TWIN-SPOT CARPETS (*Xanthorhoe spadicearia* and *Xanthorhoe ferrugata*).

The separation of these two moths is a problem for many people. The Red-twin-spot usually has a red median band on the forewing, but in some forms this band can be very dark or almost black. The Dark-barred Twin-spot, as the common name implies, has the median band of the forewing dark - it is in fact usually black. However, there is a form that has a reddish band. Actually it is the typical form that has a red band - those with black bands being referable to *ab. unidentaria*. The red-banded typical form appears rare.

One of the key features for separation has been the presence (Dark-barred) or absence (Red) of a notch on the INNER edge of the red/dark median forewing band at the costa (leading edge). This character is mentioned in Bernard Skinner's *Colour identification guide to Moths of the British Isles* (Viking, 1984) and is repeated in the 1998 revision. The character is repeated by Paul Waring and Martin Townsend in their recent identification guide (Waring, Townsend and Lewington, 2003. *Field Guide to Moths of Great Britain and Ireland*. British Wildlife Publishing) and has been widely used by many - including myself.

Recently, however, John Chainey suggested to me that that this character may not, in fact, be quite as reliable as is widely believed. Accordingly, I examined the genitalia of the males in my collection of both species. This is, in fact, achievable by merely brushing away the scales at the tip of the abdomen, from below, using a Woodcock's pin-feather or similar. The two species are immediately and easily separated by the length and shape of the processes that arise from the inner face of the valves (see illustrations in Peder Skou's book *The Geometroid Moths of North Europe* Brill/Scandinavian Science Press, 1986, but note that in *spadicearia* the processes are actually rather larger than drawn; the females are also illustrated in this book).

As a result of this examination I am able to report that THE NOTCH CHARACTER DOES NOT WORK. I have examined males as follows:

Vernacular Name	With Notch /No Notch
Red Twin-spot Carpet <i>X. spadicearia</i>	10 /13
Dark-barred Twin-spot Carpet <i>X. ferrugata</i>	14 /4

Table Five : Specimens of Red Twin-spot Carpet *X. spadicearia* and Dark-barred Twin-spot Carpet *X. ferrugata*, showing the comparative presence or absence of the 'notch' character (males only).

Another result is the discovery that there do not appear now to be any valid records of the red-banded form of Dark-Barred Twin-spot Carpet (*ferrugata*) in Hertfordshire - the few that I am responsible for are all Red Twin-spots (*spadicearia*) and I feel it is unsafe to accept others unless they are checked. The dark-barred form of the Red Twin-spot IS present in Hertfordshire (about 5 percent based on my own material).

Identification in the field, of live moths, may be a problem and it is recommended that if you do not collect you should at least bring the live moths back home for a closer look in daylight. The Red

Twin-spot usually has a white band on the outside of the red/dark median band and the other characters in Waring and Townsend seem to work OK. However, some of my dissected male Dark-barred Twin-spots also have a whitish outer edge to the band. The reality is probably that many examples may not be identifiable from a live insect.

1734 July Belle *Scotopteryx luridata plumbaria* (Fabricius, 1775)

The only site for this species this year was Thurstaston Common SJ2484 where adults were trapped at MVL on 31-May (1), 8-Jun (4), 17-Jun (6), 30-Jun (5) and 13-Jul (2) (DH). One of the specimens on 17-Jun was confirmed by dissection as a male of this species (SPF).

1740 Galium Carpet *Epirrhoe galiata* ([Denis & Schiffermüller], 1775)

Marbury Country Park SJ6576 was the only site where this moth occurred when an adult came to MVL on 13-Aug (LB,DJ).

1749 Dark Spinach *Pelurga comitata* (Linnaeus, 1758)

The usual single record of this attractive moth was at Frodsham SJ5277 this year. A single specimen came to actinic light on 26-Jul (RGB).

1752 Purple Bar *Cosmorhoe ocellata* (Linnaeus, 1758)

The two single records for this moth in 2004 were virtually as far apart as you can get. They were both to MVL at Bramhall SJ8884 on 2-Aug (ACh) and the other at Thurstaston Common SJ2484 on 19-Aug (DH).

1756 Northern Spinach *Eulithis populata* (Linnaeus, 1758)

Incredibly there were also just two records of this common species in 2004! This must surely be due to low numbers of recorders venturing into suitable habitat? The first was one moth at Romiley SJ9390 to MVL on 4-Aug (SPF). The other was at a more usual site when four adults were recorded, also to MVL at Pym chair SJ9976 on 5-Sep (SPC). This was not the only scarce species that was recorded that night by SPC – see below.

1761 Autumn Green Carpet *Chloroclysta miata* (Linnaeus, 1758)

This species can be confused with Red-green Carpet *C. siterata* but with care can be split via assessment of the external characters. Thankfully these features were obvious on the wing fragments found at Higher Poynton SJ9483 on 10-Apr (SHH). This was the only record in 2004.

1767 Pine Carpet *Thera firmata* (Hübner, 1822)

There was a sole record of this species with a single adult to MVL at Marbury Country Park SJ6576 on 3-Sep (LB,DJ).

1775 Mottled Grey *Colostygia multistrigaria* (Haworth, 1809)

This species is more likely to be found in the elevated areas of the county and the two sites in 2004 were typical. The first single adult was at Lyme Park SJ9684 to MVL on 17-Mar (PJF) and the other, also to MVL was at Higher Poynton SJ9483 on 27-Mar (SHH).

1792 Dark Umber *Philereme transversata britannica* (Hufnagel, 1767)

A single larval record of two specimens on the underside of on Alder Buckthorn *Frangula alnus* leaves at Old Pale Farm, Delamere SJ5569 on 29-May was the only report in 2004 (BB).

1797 Autumnal Moth *Epirrita autumnata* (Borkhausen, 1794)

In line with CMG requirements, this species must be confirmed via genitalia dissection to confirm. There was just a single confirmed record in 2004 when a male came to MVL at Elton SJ4575 on 16-Oct (MB, SH).

1798 Small Autumnal Moth *Epirrita filigrammaria* (Herrich-Schäffer, 1846)

The productive night of 5-Sep at Pym chair SJ9976 resulted in approximately 30 adults to MVL (SPC) and this represents the only record in 2004.

1800 Northern Winter Moth *Operophtera fagata* (Scharfenberg, 1805)

This species can sometimes be difficult to split from Winter Moth *Operophtera brumata* but specimens of *fagata* are usually larger and paler and with care can be identified with confidence. The following records of single males were all to MVL. Alsager SJ8154 on 1-Nov and 11-Nov (MD) and at Mere SJ7381 on 8-Nov (SBI).

1804 Barred Rivulet *Perizoma bifaciata* (Haworth, 1809)

SBI's 'moth Mecca' produced the only record of this species in 2004 when a single adult was attracted to MVL at Mere SJ7381 on 2-Aug.

1807 Grass Rivulet *Perizoma albulata* ([Denis & Schiffermüller], 1775)

This species was recorded more widely in 2004 with single specimens recorded as follows: Lyme Handley SJ9482 one flushed from the ground, on 27-May (SHH), Thurstaston Common SJ2484 to MVL on 3-Jun (DH) and Bramhall SJ8884 to a black tube on 29-Jul (ACh).



1822 Marsh Pug *Eupithecia pygmaeata* (Hübner, 1799)

A single moth found during daytime at Handforth SJ8783 on 10-May was the only record received this year (BTS).

1842 Plain Pug *Eupithecia simpliciatata* (Haworth, 1809)

There were five records in 2004 of this species which represents a very good tally of this rare moth. Two sites were involved with the first at Northwich SJ6473 to actinic light on 20-Jul (MP, gen det. AW). The other four records were at Nantwich SJ6752 where single adults were present

at MVL on 4-Aug, 6-Aug, 7-Aug and 10-Aug (DT). The latter records were not verified via dissection but a good photograph was provided which certainly confirms at least one of them.

1856 Larch Pug *Eupithecia lariciata* (Freyer, 1842)

There was a sole specimen attracted to MVL at Mere SJ7381 on 11-Aug (SBI). For new sites, this species normally has to be dissected.

1865 Broom-tip *Chesias rufata* (Fabricius, 1775)

A single specimen of this lovely moth was attracted to MVL at Alsager SJ8154 on 29-Jul (MD).

1870 Chimney Sweeper *Odezia atrata* (Linnaeus, 1758)

Being a classic day-flier, this species is perhaps more likely to be found by regular butterfly recorders and the fact that the county butterfly recorder provided us with the only two records of the year is perhaps not that surprising – although this is a common species. There was a single adult at Morley Green SJ8281 on 31-May and approximately 180 individuals at Hooksbank Wood, Styal SJ8182 on 10-Jun (BTS).

1875 Small White Wave *Asthena albulata* (Hufnagel, 1767)

Just a single moth recorded in 2004 when one was attracted to actinic light at Northwich SJ6473 on 4-Jul (MP).

1907 Bordered Beauty *Epione repandaria* (Hufnagel, 1767)

A lovely moth and is one that seems to have a stronghold in the Marbury area. There were singles at Marbury SJ6675 on 23-Jul (PMH,MP, P&CB,PW) to MVL, Marbury Country Park SJ6576 on 2-Aug, 4-Aug and 17-Aug (LB,DJ) to MVL. Other records were a singleton at Alvanley SJ5073 on 28-Jul (AJ,TE) to actinic light, two adults at Bickerton Hills SJ5257 to MVL on 7-Aug (MD), and a single specimen at Bromborough SJ3479 on 7-Aug (ES).

1910 Lilac Beauty *Apeira syringaria* (Linnaeus, 1758)

This attractive and unusual looking species was recorded at two sites. A single moth to actinic light at Alvanley SJ5073 on 15-Jun (AJ,TE) and two adults to MVL at Higher Poynton SJ9483 on 13-Jul (SHH).

1912 August Thorn *Ennomos quercinaria* (Hufnagel, 1767)

This species seems to be genuinely scarce in Cheshire. There were three records, all of single moths to MVL. Mere SJ7381 on 13-Aug (SBI), Ness Gardens SJ3075 (HV,MN) and finally at Great Sutton SJ3875 on 3-Sep (MBe).

1918 Lunar Thorn *Selenia lunularia* (Hübner, 1788)

The garden of PMH has been the only garden in the last two years where this species has occurred. There was again only a single specimen to MVL at Marbury Country Park SJ6576 on 19-Mar by PMH.



1927 Brindled Beauty *Lycia hirtaria* (Clerck, 1759)

This species was present at two sites in 2004. There were adults present at Alsager SJ8154 to MVL on 22-Apr (1) and 25-Apr (2) (MD) and another single specimen at MVL on 25-Apr at Marbury Country Park SJ6576 (LB,DJ).

1928 Belted Beauty *Lycia zonaria* ([Denis & Schiffermüller], 1775)

Although there were targeted recording sessions weekly for this species, only two records were actually submitted to the database for this species. Both were at Meols Common with a male and a female (not in cop) being found on 23-Mar at SJ2390 (GJ), and an ovipositing female and a pair in cop found at SJ2490 on 28-Mar (SPF,AW,MP et al). Another visit to the Wirral about a week later than the last record proved unfruitful (SPF,PG).

**1978 Pine Hawk-moth** *Hyloicus pinastri* (Linnaeus, 1758)

** The first county record of this species a single specimen at MVL at Mere SJ7381 on 18-Jul (SBI). This record seems to confirm the northerly expansion of this species and let's hope it's the start of a wholesale increase in the population!

1987 Bedstraw Hawk-moth *Hyles gallii* (Rottemburg, 1775)

This capture of a single adult at MVL at Alsager SJ8154 on 8-Aug (MD) was the first record since 1990 when larvae were found at Saltersley Moss

SJ8180. Indeed, this is possibly the first ever confirmed sighting of an adult of this species in Cheshire.

1995 Puss Moth *Cerura vinula* (Linnaeus, 1758)

This is a surprisingly rare moth in Cheshire. The records for the last ten years are summarized in *Table Six* below. It is possible that searching for the larval stages would be more productive. The only specimen in 2004 was to actinic light at Frodsham SJ5277 on 14-May (RGB).

Site	Gridref	Quantity	Stage	Year	Recorder	Method
Halton	SJ5482	1	Adult	1994	Steve McWilliam	MVL
Moore	SJ5986	0	Larval	1994	Steve McWilliam	Sweeping
Moss-side	SJ5886	3	Larval	1994	LW Hardwick	Field record / observation
Hale	SJ7886	1	Adult	1995	Keith Neal	MVL
SJ66	SJ66	0	Not recorded	1996	Anon	Not recorded
Hale	SJ7886	1	Adult	1997	Keith Neal	MVL
Wallasey	SJ2792	0	Larval	1998	Ian Smith	Field record / observation
Cheadle Hulme	SJ8786	1	Adult	1999	Geoff Lightfoot	MVL
Halton	SJ5482	2	Egg	1999	Steve McWilliam	Field record / observation
Hallwood	SJ5381	0	Larval	1999	Steve McWilliam	Field record / observation
Mouldsworth	SJ5170	1	Adult	2002	Ian E Landucci	Actinic light
Frodsham	SJ5277	1	Adult	2004	Ray G. Bertera	Actinic light

Table Six : Records of Puss Moth C. vinula in VC58 1994-2004

1998 Poplar Kitten *Furcula bifida* (Brahm, 1787)

A single record of one moth at MVL at Heald Green SJ8586 on 31-May (BTS).

2035 Round-winged Muslin *Thumatha senex* (Hübner, 1808)

This species seems to have had a good year in 2004 with most of the records from one site. There were adults present at actinic light at Ness Gardens SJ3075 on 23-Jul (4), 27-Jul (1), 28-Jul (4), and 29-Jul (1) (HV,MN). There were also records at MVL at Chester SJ4168 (1) on 6-Jul (TE), Marbury Country Park SJ6576 (1) on 10-Jul (LB,DJ) and Fodens Flash SJ7261 (3) on 24-Jul (MD).

2047 Scarce Footman *Eilema complana* (Linnaeus, 1758)

Another species to have an incredible year (in line with Lancashire) with all four records in 2004 being in the south of the county. All the records were of single specimens and to MVL. Alsager SJ8154 was the main centre with specimens recorded on 20, 21 and 26-Jul (MD). The other was at Nantwich SJ6752 on 21-Jul (DT).

2088 Heart and Club *Agrotis clavis* (Hufnagel, 1766)

The same site produced the only two records of this species in 2004. A male was attracted to MVL at Cheadle Hulme SJ8786 on 10-Jun (GL, gen det SPF) and the other, a female was in the same trap on 28-Jul (GL, gen det SPF). Both specimens were very worn and the latter specimen needs to be checked against a female Heart & Dart *A. exclamationis* this year.

2114 Double Dart *Graphiphora augur* (Fabricius, 1775)

Two records, both single specimens. The first was at Upton SJ2588 to actinic light on 28-Jun (HD) and the other at MVL at Chester SJ4168 on 3-Jul (TE).

2119 Pearly Underwing *Peridroma saucia* (Hübner, 1808)

Just a single specimen attracted to MVL at Chester SJ4168 on 6-Jul (TE).

2127 Triple-spotted Clay *Xestia ditrapezium* ([Denis & Schiffmüller], 1775)

There were two specimens at the same site in the west of the county where this species is most often recorded. Recorders in the east are requested to retain specimens at new sites. Both of the 2004 records were at Mickle Trafford SJ4570 to actinic light on 6 and 27-Jun (MBoo).

2132 Neglected Rustic *Xestia castanea* (Esper, 1798)

The only record of this species was of larvae swept from Ling *Calluna vulgaris* at Midgley Hill SJ9866 on 25-Apr (SHH).

2142 Beautiful Yellow Underwing *Anarta myrtilli* (Linnaeus, 1761)

Typical sites produced the two daytime records of this species in 2004. The first was a single moth at Thurstaston Common SJ2484 on 25-Apr (BS) and the other at Danes Moss SJ9070 on 22-May when two were seen (SHH).

2165 Small Ranunculus *Hecatera dysodea* ([Denis & Schiffmüller], 1775)

**The first county records are summarised below in an extract from a report supplied to the Ent. Rec (GJ):

“On the night of the 22 July 2004 I recorded a single specimen of Small Ranunculus *H. dysodea* in my garden light-trap in Birkenhead (SJ3286). As I had no previous experience of this species and was aware of the importance of the record, a photograph of the specimen was e-mailed to several Lepidopterists who I presumed may have had experience of this species. These included John Clifton, Barry Goater, Colin Plant and Paul Waring, who all responded to my mail happily confirming my initial identity. On the night of the 3rd August 2004 I recorded a second single specimen of Small Ranunculus *H. dysodea* (the first was retained as a voucher specimen) in my garden light-trap. The second individual was released after photographing, but the wing was marked with a spot of red nail varnish, to ensure recognition if recaptured. Interestingly, both individuals were in immaculate condition. On the capture of the first individual I was happy to presume its origin as that of a migrant. However, upon the capture of the second individual I also began to entertain the possibility that a small population of *dysodea* may have recently established locally. There is certainly a profusion of waste ground close to my home that would appear to provide suitable habitat. Barry Goater (*pers.com.*) suggests searching for larva on the leaves of Prickly Lettuce *Lactuca serriola* (L.), which is found locally (2002. Preston, Pearman & Dines. New Atlas of British Flora p.624.). Although in recent searches of waste ground I have been unable to locate any *Lactuca* spp at the current time.”

**2192 Brown-line Bright Eye *Mythimna conigera* ([Denis & Schiffmüller], 1775)**

The only single specimen was at a lamp and sheet set up at Burton Point Farm SJ3073 on 24-Jul (LG).

2225 Minor Shoulder-knot *Brachylomia viminalis* (Fabricius, 1777)

The only specimen was a single moth at actinic light at Sale SJ7992 on 24-Jul (PBH).

2231 Deep-brown Dart *Aporophyla lutulenta* ([Denis & Schiffermüller], 1775) and 2231a Northern Deep-brown Dart *Aporophyla lueneburgensis* (Freyer, 1848)

These species are often considered to be conspecific. There was a single specimen of each species in 2004. The Northern Deep-brown Dart was at MVL at Romiley SJ9390 on 5-Sep (SPF) and the Deep-brown Dart at Greasby SJ2587 on 15-Sep, also to MVL (LH).

2241 Red Sword-grass *Xylena vetusta* (Hübner, 1813)

Yet another species to have had a good year this season. There were a total of five records all of single adults. Alsager SJ8154 to MVL on 3-Feb (MD), Woods Moor SJ9187 to a lighted window on 17-Feb and what was possibly the same individual (although the first was released 200 yards away on the other side of a two storey building) found dead on 22-Apr (SHH), Marbury Country Park SJ6576 to MVL on 30-Mar (LB,PMH,JM) and at Mickle Trafford, Chester SJ4570 to actinic light on 6-Jun (MBoo).

2250 Dark Brocade *Blepharita adusta* (Esper, 1790)

Three records of single adults. Elton SJ4575 to MVL on 17-May (MB,SH), Gatley SJ8487 to actinic light on 4-Jun (DSh) and Great Sutton SJ3875 to MVL on 7-Jul (MBe).

**2252 Large Ranunculus *Polymixis flavicincta* ([Denis & Schiffermüller], 1775)**

**The first county record in what appears to have been 'the year of the Ranunculus'! This was trapped at light on 11-Sep in Crewe SJ6955 (DC, confirmed PGr). Further details will hopefully follow in next year's report.

2255 Feathered Ranunculus *Polymixis lichenea* (Hübner, 1813)

This species was as usual only recorded once this year. This time it was seemingly well away from the area in which it would be expected. A single male was attracted to actinic light at Romiley SJ9390 on 5-Oct (SPF).

2275 Dusky-lemon Sallow *Xanthia gilvago* ([Denis & Schiffermüller], 1775)

Just a single specimen of this species in 2004, at MVL at Great Sutton SJ3875 on 16-Sep (MBe).

2281 Alder Moth *Acronicta alni* (Linnaeus, 1767)

Only ever recorded in small numbers each year and 2004 was no exception with a single moth at MVL at the same site as 2003, Alsager SJ8154 on 29-May (MD).

2283 Dark Dagger *Acronicta tridens* ([Denis & Schiffermüller], 1775)

This species and Grey Dagger *A. psi* cannot be split as adults without dissection and most species specific (rather than aggregated) records therefore tend to be of the distinctly different larvae. This year we received two records – one being a larval record at Brereton Heath SJ7965 on 28-Aug (SHH,AW) and the other of an adult male at MVL at Nantwich SJ6752 on 27-Jun (DT, gen. det. MD).

2325 Crescent Striped *Apamea oblonga* (Haworth, 1809)

Two adults at MVL at Elton SJ4575 on 5-Aug (MB,SH).

2327 Clouded Brindle *Apamea epomidion* (Haworth, 1809)

There were two records of single adults at opposite ends of the county and within a day of each other, both were at MVL. The first at Marple SJ9589 on 25-Jun (MS) and the other at Bromborough SJ3479 on 26-Jun (ES).

2338 Rufous Minor *Oligia versicolor* (Borkhausen, 1792)

Another species requiring dissection and the only confirmed record in 2004 was a single male at light in Murdishaw Wood SJ5680 on 13-Jul (JJC,DE,PH,SHH,PM gen. det. male SHH).

2343a Lesser Common Rustic *Mesapamea didyma* (Esper, 1788)

This moth also needs to be assessed under the microscope and there was a single confirmed male at MVL at Alsager SJ8154 on 26-Jul (MD, gen. det. MD).

2360 Ear Moth *Amphipoea oculatea* (Linnaeus, 1761)

A single male at MVL on 4-Aug at Chester SJ411681 (TE, gen. det. male SPF).

2367 Haworth's Minor *Celaena haworthii* (Curtis, 1829)

A single record of five adults at MVL at a typical site - Pym chair SJ9976 on 5-Sep (SPC).

2371 Brown-veined Wainscot *Archanara*

dissoluta (Treitschke, 1825)

Just one specimen in 2004 at MVL at Marbury Country Park SJ6576 on 1-Sep (LB,DJ).

2377 Fen Wainscot *Arenostola phragmitidis*

(Hübner, 1803)

Another wet area species which is rarely recorded. There was a single adult to MVL on 31-Jul at Frodsham Marsh SJ5179 (MD).

2385 Small Mottled Willow *Spodoptera exigua*

(Hübner, 1808)

One record of a single adult at actinic light at Frodsham SJ5277 on 3-Sep (RGB).

2391 Silky Wainscot *Chilodes maritimus*

(Tauscher, 1806)

In what seems to have been a good year for this species there were a total of four records. All were at MVL and at Marbury. Marbury Number One Tank SJ6675 (2) on 23-Jul (PMH, MP, P&CB, PW), Marbury Country Park SJ6576, a single adult on 5-Aug (LB), Marbury Country Park SJ6576, a single adult on 13-Aug and 14-Aug (LB,DJ).

2394 Anomalous *Stilbia anomala* (Haworth, 1812)

The very productive night of 5-Sep produced the first record of this species since 1903, this latter record being referred to in the Day list. This was a single moth to MVL at Pym chair SJ9976 (SPC). Enquiries were made of the captor and he confirmed that he has 'seen it in good numbers in Scotland, this one was the first I've seen in England' (though he had not trapped northern moorland this time of the year before). This was only the 3rd Cheshire record.

2400 Scarce Bordered Straw *Helicoverpa armigera* (Hübner, 1808)

There was a single larval record of this species which has an unusual origin. It was found within a lettuce bought at the Morrisons supermarket Bredbury SJ9291 on 1-Dec (SPF). Unfortunately the larva died from a fungal infection during a failed attempt to rear it through.

2403 Bordered Straw *Heliothis peltigera* ([Denis & Schiffermüller], 1775)

Just one moth at MVL at Bramhall SJ8884 on 12-Jun (ACh).

**2410 Marbled White Spot *Protodeltote pygarga* (Hufnagel, 1766)**

There was a single specimen of this moth at MVL at Alsager SJ8154 on 8-Jun (MD). This is only the 3rd Cheshire record and the first since 1987.

2412 Silver Hook *Deltote uncula* (Clerck, 1759)

**The first county record of this moth (another unlikely looking noctuid) was at MVL at Marbury Country Park SJ6576 on 8-Jun (LB,DJ). The extremely small size is reflected in the photograph of this species giving comparison with a standard drawing pin.



2440 Lempke's Gold Spot *Plusia putnami gracilis*
Lempke, 1966

After the recent records of this species (2001, the first county record and 2003, two specimens at Cheadle Hulme), a further record was perhaps to be expected. The only record in 2004 was a male at MVL at Romiley SJ9390 on 14-Jul (SPF gen. det. male SPF).

2447 Scarce Silver Y *Syngrapha interrogationis*
(Linnaeus, 1758)

A big surprise in 2004 was the location of a specimen of this species in the MVL trap at Mere SJ7381 on 15-Aug (SBI). This seems to be well away from any normal habitat and there could possibly be a migrant or a specimen attempting to breed in a new area. This is only the 6th record in the county. The records for this species are summarized below in *Table Seven*.



Site	Gridref	Quantity	Stage	Date	Recorder
Staley Brushes	SJ99	4	Adult	1844	R.S.Edelston
Brockholes Wood	SK0799	1	Adult	1992	S.H.Hind et al
Prestbury	SJ8976	1	Adult	1997	D.J.Poynton
Arnfield Reservoir	SK0197	1	Adult	2001	S.P. Farrell, P.Greenall, S.H. Hind, A. Wander, P.M. Hill
Tintwistle	SK0297	1	Adult	2001	H.E. Beaumont, R.F. Botterill
Mere	SJ7381	1	Adult	2004	S. Blamire

Table Seven : Records of Scarce Silver Y S. interrogationis in VC58.

2462 Mother Shipton *Callistege mi* (Clerck, 1759)

This species must surely be more common than records suggest. Only a single record of a single specimen in Cheshire this year of this day-flier at Ness SJ2975 on 8-Jun (IFS).

2463 Burnet Companion *Euclidia glyphica* (Linnaeus, 1758)

The comments relating to Mother Shipton *E. glyphica* also apply to this species. There was a single record of between ten and twenty individuals at Thurstaston Cliffs SJ2383 on 14-May (LH).

2473 Beautiful Hook-tip *Laspeyria flexula* ([Denis & Schiffermüller], 1775)

There were three records in 2004 of this well-named moth. The first and last were at Alsager SJ8154 to MVL on 19-Jul, the other being a wing fragment found on 27-Jul at the same site and possibly relating to the same individual (MD). The other was at actinic light at Alvanley SJ5073 on 20-Jul (AJ). These represent the 2nd - 4th county records. The first was at Mouldsworth in 2001.

2485 Marsh Oblique-barred *Hypenodes humidalis* Doubleday, 1850

One record of this micromoth-like macromoth with a single specimen to MVL at Elton SJ4575 on 13-Jul (MB,SH).

3.3 Additional Macromoth Records Received Since the Last Report and Relating to 2003.

In this section we have collated the records for 2003 which were either received too late to be included or only confirmed after the production of last year's report. It is really helpful if records can be sent through to us in whatever format is most convenient to the recorders concerned, well before the normal cut-off date of 30th April each year. Recordors are also encouraged to send interim summaries during the year if this is possible. Records received after 30th April 2005 (but before 30th April 2006) will of course still be incorporated into the planned Atlas.

1637 Oak Eggar *Lasiocampa quercus* (Linnaeus, 1758)

Daytime record at Royden Park SJ2485 on 08-Jul-2003 (IW).

1795 November Moth *Epirrita dilutata* ([Denis & Schiffermüller], 1775)

Several specimens at MVL at Halton SJ5683 on 05-Nov-2003 (JJC) at least one of which was confirmed by dissection (SPF).

1807 Grass Rivulet *Perizoma albulata* ([Denis & Schiffermüller], 1775)

Ten specimens seen during the daytime at Red Rocks NR SJ2087 on 16-Jun-2003 (GJ).

1815 Cloaked Pug *Eupithecia abietaria* (Goeze, 1781)

A single specimen at a black light tube, at Bramhall SJ8884 on 10-Jul-2003 (ACh).

1879 Seraphim *Lobophora halterata* (Hufnagel, 1767)

Three specimens all at MVL and at Birkenhead SJ3286 on 18-May, 26-May and 31-May-2003 (GJ).

1928 Belted Beauty *Lycia zonaria* (Harrison, 1912)

Two pairs in cop side by side at Moreton SJ2390 on 06-Apr-2003 (GJ).

2108 Lunar Yellow Underwing *Noctua orbona* (Hufnagel, 1766)

This was an exciting find with nine larvae found at the Belted Beauty *L. zonaria* site near Meols common SJ2490 (PCP). This record will need to be confirmed before formal acceptance.

2231a Northern Deep-brown Dart *Aporophyla lueneburgensis* (Freyer, 1848)

A single adult at MVL at Wilmslow SJ8681 on 12-Sep-2003 (AMB).

2283 Dark Dagger *Acronicta tridens* ([Denis & Schiffermüller], 1775)

Two adult specimens confirmed by dissection at MVL at Alsager SJ8154 on 09-Jun and 02-Jul-2003 (MD gen. det. male MD).

2338 Rufous Minor *Oligia versicolor* (Borkhausen, 1792)

Three specimens confirmed by dissection. The first at Birkenhead SJ3286 to MVL on 07-Jun-2003 (GJ gen. det. GJ) and the other at Etherow Country Park SJ9791 where two females were at MVL on 26-Jul-2003 (SPF,BS,MD,DT et al gen. det. females SPF).

2357 Large Ear *Amphipoea lucens* (Freyer, 1845)

A single specimen at Alsager SJ8154 to MVL on 21-Aug-2003 (MD, gen. det male MD).

2379 Small Rufous *Coenobia rufa* (Haworth, 1809)

A single specimen at MVL at Bramhall SJ8884 on 09-Aug-2003 (ACh).

2391 Silky Wainscot *Chilodes maritimus* (Tauscher, 1806)

A single moth at MVL at Moore Nature Reserve SJ5886 on 05-Jul-2003 (JJC).

2400 Scarce Bordered Straw *Helicoverpa armigera* (Hübner, 1808)

A single moth at MVL at Allstock SJ7471 on 19-Aug-2003 (PMH).

2462 Mother Shipton *Callistege mi* (Clerck, 1759)

Two records of six specimens on the 29-May-2003 and a single moth on 04-Jun-2003 were seen during a transect at Ashton's Flash SJ6674 (SHeff).

3.4 Species New for their Respective 10km Squares

Here we have created a summary of the species which, according to the information available at the present time, are new for their respective squares in 2004. This data will become more and more accurate as time goes by and we welcome comment from anyone that has information to add to this summary. Some of the squares are only partially in VC58 and although species may have been recorded in adjacent counties, they are new for this side of the boundary. Some squares appear to have very few historic records and the contribution that the recorders in these areas have made has greatly enhanced the species list for these 10km squares in the last few years.

SD90

Stigmella lemniscella (SHH), *Stigmella obliquella* (SHH), *Stigmella tityrella* (SHH),
Rose Leaf Miner *Stigmella anomalella* (SHH), *Stigmella hybnerella* (SHH), *Stigmella nylandriella* (SHH),
Stigmella microtheriella (SHH), *Stigmella alnetella* (SHH), *Heliozela respuldella* (SHH),
Heliozela hammoniella (SHH), *Bedellia somnulentella* (SHH), *Bucculatrix cidarella* (SHH),
Bucculatrix thoracella (SHH), *Caloptilia elongella* (SHH), *Caloptilia betulicola* (SHH),
Caloptilia stigmatella (SHH), *Parornix betulae* (SHH), *Deltaornix torquillella* (SHH),
Callisto denticulella (SHH), *Phyllonorycter heegeriella* (SHH), *Phyllonorycter sorbi* (SHH),
Phyllonorycter corylifoliella (SHH), Firethorn Leaf Miner *Phyllonorycter leucographella* (SHH),
Nut Leaf Blister Moth *Phyllonorycter coryli* (SHH), *Phyllonorycter tristrigella* (SHH),

Phyllonorycter stettinensis (SHH), *Phyllonorycter froelichiella* (SHH), *Phyllonorycter nicellii* (SHH), *Phyllonorycter acerifoliella* (SHH), *Phyllonorycter platanoidella* (SHH), *Mompha raschkiella* (SHH), *Blastodacna hellerella* (SHH), Scalloped Hook-tip *Falcaria lacertinaria* (SHH), Grey Pug *Eupithecia subfuscata* (SHH), Buff-tip *Phalera bucephala* (SHH), Cinnabar *Tyria jacobaeae* (SHH).

SJ27

Coleophora lineolea (IFS), *Depressaria ultimella* (IFS), Barred Fruit-tree Tortrix *Pandemis cerasana* (HD), Mother Shipton *Callistege mi* (IFS).

SJ28

Eriocrania sangii(BS), *Coleophora lineolea* (IFS), *Scrobipalpa salinella* (IFS), *Aleimma loeflingiana* (BS), *Eucosma obumbratana* (IFS), *Adaina microdactyla* (IFS), Oblique Carpet *Orthonama vittata* (DH), Tawny Pinion *Lithophane semibrunnea* (HD).

SJ36

Scrobipalpa acuminatella (IFS).

SJ37

Ectoedemia argyropeza (SHH,KM), *Ectoedemia subbimaculella* (SHH,KM), *Stigmella perpygmaeella* (BTS), *Stigmella alnetella* (SHH,KM), *Heliozela sericiella* (SHH,KM), *Heliozela resplendella* (SHH,KM), *Caloptilia elongella* (SHH,KM), *Phyllonorycter cerasicolella* (SHH,KM), *Phyllonorycter quinnata* (BS), *Phyllonorycter lautella* (SHH,KM), *Phyllonorycter stettinensis* (SHH,KM), *Phyllonorycter trifasciella* (SHH,KM), *Ypsolopha sequella* (MBe), *Acrolepia autumnitella* (BTS), *Diurnea fagella* (LG), *Epiblema cynosbatella* (MBe), *Pammene aurita* (MBe), *Pammene fasciana* (MBe), *Grapholita janthinana* (BTS), *Emmelina monodactyla* (MBe), Blue-bordered Carpet *Plemyria rubiginata rubiginata* (LG), May Highflyer *Hydriomena impluviata* (ES), Toadflax Pug *Eupithecia linariata* (MBe), Spring Usher *Agriopsis leucophaearia* (MBe), Round-winged Muslin *Thumatha senex* (HV,MN), Tawny Pinion *Lithophane semibrunnea* (ES), Dark Brocade *Blepharita adusta* (MBe), Dark Chestnut *Conistra ligula* (MBe), Blackneck *Lygephila pastinum* (ES).

SJ38

Paraswammerdamia lutarea (GJ), *Lobesia abscisana* (GJ), *Pammene fasciana* (GJ), *Pyla fusca* (GJ), Small Ranunculus *Hecatera dysodea* (GJ).

SJ45

Ectoedemia angulifasciella (SHH), *Bedellia somnulentella* (SHH), *Phyllonorycter heegeriella* (SHH), *Acrolepia autumnitella* (SHH), Rhomboid Tortrix *Acleris rhombana* (SHH).

SJ46

Ectoedemia atricollis (SHH,KM), *Ectoedemia occultella* (SHH,KM), *Stigmella salicis* (SHH,KM), *Stigmella ulmivora* (SHH,KM), *Stigmella luteella* (SHH,KM), *Stigmella alnetella* (SHH,KM), *Heliozela resplendella* (SHH,KM), *Bedellia somnulentella* (SHH,KM), *Bucculatrix cidarella* (SHH,KM), *Bucculatrix ulmella* (SHH,KM), *Caloptilia elongella* (SHH,KM), *Callisto denticulella* (SHH,KM), *Phyllonorycter harrisella* (SHH,KM), *Phyllonorycter heegeriella* (SHH,KM), *Phyllonorycter stettinensis* (SHH,KM), *Phyllonorycter froelichiella* (SHH,KM), *Phyllonorycter nicellii* (SHH,KM), *Phyllonorycter acerifoliella* (SHH,KM), *Coleophora serratella* (SHH,KM), *Coleophora argentula* (SHH,KM), *Acleris sparsana* (SHH,KM), True Lover's Knot *Lycophotia porphyrea* (TE), Pine Beauty *Panolis flammea* (TE), Ear Moth *Amphipoea oculea* (TE).

SJ47

Ectoedemia argyropeza (SHH,KM), *Ectoedemia angulifasciella* (SHH), *Ectoedemia atricollis* (MB,SH), *Ectoedemia albifasciella* (SHH), *Stigmella speciosa* (SHH), *Stigmella microtheriella* (SHH), *Tischeria ekebladella* (SHH), *Bedellia somnulentella* (SHH), *Bucculatrix thoracella* (MB,SH), *Deltaornix torquillella* (SHH), *Callisto denticulella* (SHH), *Phyllonorycter heegeriella* (SHH), *Phyllonorycter spinicolella* (SHH,KM), Nut Leaf Blister Moth *Phyllonorycter coryli* (SHH), *Phyllonorycter strigulatella* (SHH), *Phyllonorycter lautella* (SHH,KM), *Phyllonorycter schreberella* (SHH), *Phyllonorycter acerifoliella* (SHH), *Ypsolopha alpella* (MB,SH), *Ypsolopha ustella* (MB,SH), *Acrolepia autumnitella* (SHH), Pistol Case-bearer *Coleophora anatipennella* (SHH,KM), *Chrysoesthia drurella* (SHH), *Scrobipalpa costella* (SHH), *Lobesia abscisana* (MB,SH), *Calamotropha paludella* (MB,SH), *Udea olivalis* (MB,SH), *Hellinsia osteodactylus* (MB,SH), Red Sword-grass *Xylena vetusta* (MBoo), Old Lady *Mormo maura* (MBoo).

SJ54

Bedellia somnulentella (SHH), *Parornix finitimella* (SHH), *Phyllonorycter geniculella* (SHH), *Ypsolopha parenthesesella* (SHH).

SJ55

Bedellia somnulentella (SHH), *Blastobasis lignea* (MD), Codling Moth *Cydia pomonella* (MD), *Udea prunalis* (MD), Mother of Pearl *Pleuroptya ruralis* (MD), Bordered Beauty *Epione repandaria* (MD), Buff Footman *Eilema depressa* (MD).

SJ56

Bedellia somnulentella (SHH), Dark Umber *Philereme transversata britannica* (BB), Tawny Pinion *Lithophane semibrunnea* (BB).

SJ57

Bedellia somnulentella (BTS), *Elachista atricomella* (MD), *Tachystola acroxantha* (RGB), *Aethes smeathmanniana* (RGB), *Celypha striana* (RGB), Codling Moth *Cydia pomonella* (RGB), *Pyrausta purpuralis* (AJ,TE), Rusty-dot Pearl *Udea ferrugalis* (RGB), *Trachycera advenella* (MD), Thistle Ermine *Myelois circumvoluta* (RGB), Barred Hook-tip *Watsonalla cultraria* (AJ,TE), White-spotted Pug *Eupithecia tripunctaria* (AJ,TE), Dog's Tooth *Lacanobia suasa* (AJ,TE), Fen Wainscot *Arenostola phragmitidis* (MD), Small Mottled Willow *Spodoptera exigua* (RGB).

SJ58

Caloptilia alchimiella (JJC,DE,PH,SHH,PM), *Coleophora glaucicolella* (JJC,DE,PH,SHH,PM), *Coleophora tamesis* (JJC,DE,PH,SHH,PM), *Brachmia blandella* (JJC,DE,PH,SHH,PM), *Agapeta zoegana* (JJC,DE,PH,SHH,PM), *Lozotaeniodes formosanus* (JJC,DE,PH,SHH,PM), *Epiblema roborana* (JJC,DE,PH,SHH,PM), Buff Footman *Eilema depressa* (JJC,DE,PH,SHH,PM), Slender Brindle *Apamea scolopacina* (JJC,DE,PH,SHH,PM), Rufous Minor *Oligia versicolor* (JJC,DE,PH,SHH,PM), Pinion-streaked Snout *Schranksia costaestrigalis* (JJC,DE,PH,SHH,PM).

SJ65

Micropterix calthella (SHH,AW), *Bohemania pulverosella* (SHH), *Incurvaria masculella* (SHH), *Nemophora degeerella* (SHH,AW), *Heliozela resplendella* (SHH), *Psyche casta* (SHH,AW), Laburnum Leaf Miner *Leucoptera laburnella* (SHH), *Bedellia somnulentella* (SHH), *Bucculatrix cidarella* (SHH), *Bucculatrix thoracella* (SHH), *Caloptilia elongella* (SHH), *Caloptilia rufipennella* (SHH), *Callisto denticulella* (SHH), *Phyllonorycter heegeriella* (SHH), *Phyllonorycter schreberella* (SHH), Cocksfoot Moth *Glyphipterix simplicella* (SHH,AW), Apple Fruit Moth *Argyresthia conjugella* (SHH,AW), *Acrolepia autumnitella* (SHH), *Coleophora discordella* (SHH), *Coleophora peribenanderi* (SHH), *Coleophora artemisicolella* (SHH), *Coleophora alticolella* (SHH), *Elachista kilmunella* (SHH,AW), *Pleurota bicostella* (SHH,AW), Parsnip Moth *Depressaria pastinacella* (SHH), *Neofaculta ericetella* (SHH,AW), *Scrobipalpa costella* (SHH,AW), Light Brown Apple Moth *Epiphyas postvittana* (SHH), *Orthotaenia undulana* (SHH,AW), *Epinotia bilunana* (SHH,AW), *Grapholita jungiella* (SHH,AW), *Crambus pascuella* (SHH,AW), *Amblyptilia acanthadactyla* (MD), Plain Pug *Eupithecia simplicata* (DT), Dwarf Pug *Eupithecia tantillaria* (DT), Scarce Footman *Eilema complana* (DT), Grey Shoulder-knot *Lithophane ornitopus lactipennis* (DT), Large Ranunculus *Polymixis flavicincta* (DC), Marbled Minor *Oligia strigilis* (DT,MD), Tawny Marbled Minor *Oligia latruncula* (DT,MD), Crescent *Celaena leucostigma* (DT).

SJ67

Ectoedemia argyropeza (SHH), *Ectoedemia angulifasciella* (SHH), *Stigmella tiliae* (AW), *Bedellia somnulentella* (BTS), *Blastodacna hellerella* (SHH), *Aethes smeathmanniana* (LB,DJ), *Epinotia abbreviana* (SHH), *Grapholita lunulana* (AW), *Amblyptilia acanthadactyla* (SHH), Scalloped Hook-tip *Falcaria lacertinaria* (LB,DJ), Barred Hook-tip *Watsonalla cultraria* (LB,DJ), Galium Carpet *Epirrhoe galiata* (LB,DJ), Phoenix *Eulithis prunata* (PMH,MP,P&CB,PW), Red Sword-grass *Xylena vetusta* (LB,PMH,JM), Small Dotted Buff *Photodes minima* (LB,DJ), Silver Hook *Deltote uncula* (LB,DJ).

SJ75

Micropterix aureatella (SHH), *Eriocrania salopiella* (SHH), *Eriocrania cicatricella* (SHH), *Stigmella glutinosae* (SHH), *Incurvaria masculella* (SHH), *Bedellia somnulentella* (SHH),

Caloptilia elongella (SHH), *Aspilapteryx tringipennella* (SHH), *Eucalybites auroguttella* (SHH), *Phyllonorycter lautella* (SHH), *Acrolepia autumnitella* (SHH), *Coleophora paripennella* (SHH), *Chrysoesthia sexguttella* (SHH), *Ancylis badiana* (SHH),
Bramble Shoot Moth *Epiblema uddmanniana* (SHH), *Epiblema cirsiana* (SHH),
Lathronympha strigana (SHH), Fruitlet Mining Tortrix *Pammene rhediella* (SHH),
Cydia succedana (SHH), Small Magpie *Eurrhypara hortulata* (BTS).

SJ76

Stigmella sorbi (SHH,AW), Skin Moth *Monopis laevigella* (SHH,AW), *Deltaornix torquillella* (SHH) ,
Phyllonorycter strigulatella (SHH,AW), *Phyllonorycter emberizaepenella* (SHH,AW),
Orchard Ermine *Yponomeuta padella* (MD), *Ypsolopha sequella* (MD),
Coleophora artemisicolella (SHH,AW), *Agapeta hamana* (MD), *Hedya salicella* (MD),
Bramble Shoot Moth *Epiblema uddmanniana* (MD), *Epiblema foenella* (MD), *Pammene fasciana* (MD),
Dichrorampha acuminatana (SHH,AW), *Eudonia mercurella* (MD), *Orthopygia glaucinalis* (MD),
Drinker *Euthrix potatoria* (MD), Twin-spot Carpet *Perizoma didymata* (MD),
Common Footman *Eilema lurideola* (MD), Ruby Tiger *Phragmatobia fuliginosa* (MD),
Dark Dagger *Acronicta tridens* (SHH,AW), Small Fan-foot *Herminia grisealis* (MD).

SJ77

Stigmella obliquella (SHH,KM), *Stigmella sakhalinella* (SHH,KM), *Bedellia somnulentella* (SHH),
Phyllonorycter heegeriella (SHH,KM), *Phyllonorycter quinnata* (SHH,KM),
Phyllonorycter acerifoliella (SHH,KM), *Acrolepia autumnitella* (SHH,BTS),
Phoenix *Eulithis prunata* (PMH).

SJ78

Cream Wave *Scopula floslactata* (SBI), Barred Rivulet *Perizoma bifaciata* (SBI),
Pine Hawk-moth *Hyloicus pinastri* (SBI), Tawny Pinion *Lithophane semibrunnea* (SBI),
Golden Plusia *Polychrysis moneta* (SBI), Scarce Silver Y *Syngrapha interrogationis* (SBI).

SJ79

Leopard Moth *Zeuzera pyrina* (PMH), *Bedellia somnulentella* (SPF,SHH),
Currant Clearwing *Synanthedon tipuliformis* (PBH), *Acrolepia autumnitella* (BS),
Blastobasis decolorella (BS), *Mompha subbistrigella* (PBH), *Donacaula forficella* (PBH),
Dipleurina lacustrata (PBH), Thistle Ermine *Myelois circumvoluta* (PBH),
Yellow-barred Brindle *Acasis viretata* (PBH), White Satin *Leucoma salicis* (PBH),
Centre-barred Sallow *Atethmia centrigo* (PBH), Rustic *Hoplodrina blanda* (PBH),
Blackneck *Lygephila pastinum* (PBH).

SJ85

Stigmella speciosa (SHH), *Stigmella salicis* (SHH), *Stigmella crataegella* (SHH),
Bedellia somnulentella (SHH), *Bucculatrix thoracella* (SHH), *Phyllonorycter cerasicolella* (SHH),
Phyllonorycter tristrigella (SHH), *Roeslerstammia erlebelli* (MD), Ash Bud Moth *Prays fraxinella* (MD),
Hawthorn Moth *Scythropia crataegella* (MD), *Ypsolopha ustella* (MD), *Batia unitella* (MD),
Agonopterix assimilella (MD), *Agonopterix scopariella* (MD), *Metzneria metzneriella* (MD),
Bryotropha affinis (MD), *Bryotropha domestica* (MD), *Brachmia blandella* (MD),
Helcystogramma rufescens (MD), *Agapeta hamana* (MD), *Aethes smeathmanniana* (MD),
Timothy Tortrix *Aphelia paleana* (MD), *Clepsis consimilana* (MD), *Lozotaeniodes formosanus* (MD),
Capua vulgana (MD), *Exapate congelatella* (MD), Rhomboid Tortrix *Acleris rhombana* (MD),
Acleris ferrugana (MD), *Celypha striana* (MD), *Apotomis turbidana* (MD), *Ancylis achatana* (MD),
Ancylis badiana (MD), *Epinotia rubiginosana* (MD), *Epiblema cynosbatella* (MD),
Epiblema roborana (MD), *Eucosma campoliliana* (MD), *Eucosma cana* (MD),
Pine Leaf-mining Moth *Clavigesta purdeyi* (MD), *Rhyacionia pinicolana* (MD),
Spotted Shoot Moth *Rhyacionia pinivorana* (MD), *Pammene aurita* (MD), *Pammene fasciana* (MD),
Codling Moth *Cydia pomonella* (MD), *Crambus pascuella* (MD), *Agriphila latistria* (MD),
Catoptria falsella (MD), *Dipleurina lacustrata* (MD), Meal Moth *Pyralis farinalis* (MD),
Phycita roborella (MD), *Phycitodes binaevella* (MD), Scalloped Hook-tip *Falcaria lacertinaria* (MD),
Blotched Emerald *Comibaena bajularia* (MD), Birch Mocha *Cyclophora albipunctata* (MD),
Small Blood-vein *Scopula imitaria* (MD), Small Dusty Wave *Idaea seriata* (MD),
Shoulder Stripe *Anticlea badiata* (MD), Green Carpet *Colostygia pectinataria* (MD),
Scallop Shell *Rheumaptera undulata* (MD), November Moth *Epirrita dilutata* (MD),
Sandy Carpet *Perizoma flavofasciata* (MD), Slender Pug *Eupithecia tenuiata* (MD),

Mottled Pug *Eupithecia exiguata* (MD), Dwarf Pug *Eupithecia tantillaria* (MD), Broom-tip *Chesias rufata* (MD), Brindled Beauty *Lycia hirtaria* (MD), Early Moth *Theria primaria* (MD), Bedstraw Hawk-moth *Hyles gallii* (MD), Small Elephant Hawk-moth *Deilephila porcellus* (MD), Lunar Marbled Brown *Drymonia ruficornis* (MD), Scarce Footman *Eilema complana* (MD), Broad-barred White *Hecatera bicolorata* (MD), Suspected *Parastichtis suspecta* (MD), Barred Sallow *Xanthia aurago* (MD), Brown Rustic *Rusina ferruginea* (MD), Double Lobed *Apamea ophiogramma* (MD), Marbled Minor *Oligia strigilis* (MD), Tawny Marbled Minor *Oligia latruncula* (MD), Marbled White Spot *Protodeltote pygarga* (MD), Scarce Silver-lines *Bena bicolorana* (MD), Blackneck *Lygephila pastinum* (MD), Beautiful Hook-tip *Laspeyria flexula* (MD), Lesser Common Rustic *Mesapamea didyma* (MD).

SJ86

Apple Pygmy *Stigmella malella* (SHH), *Incurvaria pectinea* (SHH), *Phyllonorycter heegeriella* (SHH), *Phyllonorycter cavella* (SHH), Larch Case-bearer *Coleophora laricella* (SHH), *Ancylys mitterbacheriana* (SHH), *Gypsonoma dealbana* (SHH).

SJ87

Bohemannia pulverosella (SHH), *Stigmella speciosa* (SHH), *Incurvaria pectinea* (SHH), *Heliozela hammoniella* (SHH,BTS), *Phyllonorycter cavella* (SHH), *Phyllonorycter strigulatella* (SHH), *Phyllonorycter lautella* (SHH,BTS).

SJ88

Narycia monilifera (IFS), *Bucculatrix nigricomella* (BTS), Azalea Leaf Miner *Caloptilia azaleella* (ACh), *Caloptilia robustella* (AMB), *Agonopterix propinquella* (BTS), *Metzneria lappella* (BTS), *Chrysoesthia sexguttella* (BTS), *Aethes beatricella* (BTS), *Acleris ferrugana* (BTS), *Palpita vitrealis* (BTS), Marsh Pug *Eupithecia pygmaeata* (BTS), Heart and Club *Agrotis clavis* (GL), Dog's Tooth *Lacanobia suasa* (AMB).

SJ96

Ectoedemia occultella (SHH), *Ectoedemia subbimaculella* (SHH), *Bedellia somnulentella* (SHH), *Bucculatrix cidarella* (SHH), *Callisto denticulella* (SHH), *Acrocercops brongniardella* (SHH), *Phyllonorycter heegeriella* (SHH), Firethorn Leaf Miner *Phyllonorycter leucographella* (SHH), *Phyllonorycter hilarella* (SHH), *Phyllonorycter schreberella* (SHH), *Coleophora juncicolella* (SHH), Larch Case-bearer *Coleophora laricella* (SHH), *Gypsonoma dealbana* (SHH), Small Elephant Hawk-moth *Deilephila porcellus* (BTS), Neglected Rustic *Xestia castanea* (SHH), Red-line Quaker *Agrochola lota* (SHH).

SJ97

Eriocrania sangii (SHH), Skin Moth *Monopis laevigella* (SHH), *Cosmiotes freyerella* (SHH), *Agonopterix assimilella* (SHH), *Philedone gerningana* (IFS), *Philedonides lunana* (SHH), *Epiblema cirsiana* (SHH), Cream Wave *Scopula floslactata* (ACsr), Anomalous *Stilbia anomala* (SPC), Pinion-streaked Snout *Schrankia costaestrigalis* (ACsr).

SJ98

Eriocrania unimaculella (SHH), *Eriocrania cicatricella* (SHH), *Eriocrania sangii* (SHH), *Stigmella paradoxa* (SHH), *Phylloporia bistrigella* (SHH), *Narycia monilifera* (PJF), *Luffia ferchaultella* (IFS), *Phyllonorycter emberizaepenella* (SHH), *Acrolepia autumnitella* (SHH), *Coleophora coracipennella* (SHH), Red Sword-grass *Xylena vetusta* (SHH).

SJ99

Micropterix aruncella (SPF), *Eriocrania semipurpurella* (SPF), Lichen Case-bearer *Dahlica lichenella* (SPF), *Phyllonorycter heegeriella* (BTS), *Ypsolopha alpella* (SPF), *Cochyliidia implicitana* (SPF), *Lozotaeniodes formosanus* (SPF), Larch Tortrix *Zeiraphera griseana* (SPF), Scalloped Hook-tip *Falcaria lacertinaria* (SPF), White-



spotted Pug *Eupithecia tripunctaria* (SPF),
 Ochreous Pug *Eupithecia indigata* (SPF), Feathered Ranunculus *Polymixis lichenea* (SPF),
 Old Lady *Mormo maura* (EK), Common Rustic *Mesapamea secalis* (SPF),
 Small Rufous *Coenobia rufa* (SPF), Scarce Bordered Straw *Helicoverpa armigera* (SPF),
 Lempke's Gold Spot *Plusia putnami gracilis* (SPF).

SK08

Ectoedemia atricollis (SHH), *Ectoedemia occultella* (SHH), *Stigmella luteella* (SHH),
Stigmella alnetella (SHH), *Incurvaria masculella* (SHH), *Heliozela hammoniella* (SHH),
Callisto denticulella (SHH), Firethorn Leaf Miner *Phyllonorycter leucographella* (SHH),
Phyllonorycter salicicolella (SHH), *Phyllonorycter cavella* (SHH), *Phyllonorycter tristrigella* (SHH),
Phyllonorycter platanoidella (SHH), *Coleophora luscinaepennella* (SHH), *Blastodacna hellerella* (SHH),
Epinotia immundana (SHH), *Grapholita janthinana* (SHH).

SK09

Common Swift *Hepialus lupulinus* (SPF,IFS),
Platyptilia gonodactyla (SPF,IFS).



3.5 Migrants

Although not a great year for numbers of migrant moths, 2004 seems to have been a year in which we saw a better level of variety among the species trapped. The highlight was undoubtedly *Palpita vitrealis* (see above for full details of this new species for the county) but almost equally impressive was the Bedstraw Hawk-moth *Hyles gallii* (the first county record since 1990 - details above in 3.2 *Systematic List of Rarer Species in 2004*).

Code	Vernacular	Taxon	Records	Individuals
0464	Diamond-back Moth	<i>Plutella xylostella</i>	22	25
1395	Rusty-dot Pearl	<i>Udea ferrugalis</i>	7	7
1398	Rush Veneer	<i>Nomophila noctuella</i>	4	5
1408		<i>Palpita vitrealis</i>	1	1
1716	Vestal	<i>Rhodometra sacrararia</i>	2	2
1984	Humming-bird Hawk-moth	<i>Macroglossum stellatarum</i>	14	12
1987	Bedstraw Hawk-moth	<i>Hyles gallii</i>	1	1
2091	Dark Sword-grass	<i>Agrotis ipsilon</i>	26	27
2119	Pearly Underwing	<i>Peridroma saucia</i>	1	1
2385	Small Mottled Willow	<i>Spodoptera exigua</i>	1	1
2400	Scarce Bordered Straw	<i>Helicoverpa armigera</i>	1	0
2403	Bordered Straw	<i>Heliothis peltigera</i>	1	1
2441	Silver Y	<i>Autographa gamma</i>	392	705

Table Eight : Migrant moth species in VC58 in 2004



3.6 Notable and RDB Species

Notable species and RDB species recorded in VC58 in 2004 are summarized below and further details for most of them can be found in the systematic list above. *Tachystola acroxantha* and *Stenoptilia millieridactyla* are both species which are quite scarce on a national scale but have established themselves well in our county. It is almost certain that clearwing species *Sesiidae* are more common than the records suggest and recorders may be rewarded, and pleasantly surprised if they purchase and try out the widely

available lures. They can of course also occasionally be located without the need for a lure, especially the strongly colonial species.

Code	Vernacular	Taxon	Records	Individuals	Status
0200		<i>Psychoides filicivora</i>	1	5	Nb
0344		<i>Phyllonorycter strigulatella</i>	11	0	Nb
0363		<i>Phyllonorycter platanoideella</i>	23	0	Nb
0373	Currant Clearwing	<i>Synanthedon tipuliformis</i>	3	7	Nb
0656		<i>Tachystola acroxantha</i>	204	613	pRDB3
0891		<i>Mompha sturnipennella</i>	1	0	Nb
1236		<i>Pammene fasciana</i>	16	18	Nb
1252		<i>Grapholita lunulana</i>	1	0	Nb
1292		<i>Calamotropha paludella</i>	1	1	Nb
1506		<i>Stenoptilia millieridactyla</i>	33	38	pRDB3
1865	Broom-tip	<i>Chesias rufata</i>	1	1	Nb
1928	Belted Beauty	<i>Lycia zonaria</i>	2	5	Na
2165	Small Ranunculus	<i>Hecatera dysodea</i>	2	2	RDBK
2325	Crescent Striped	<i>Apamea oblonga</i>	1	2	Nb
2485	Marsh Oblique-barred	<i>Hypenodes humidalis</i>	1	1	Nb

Table Nine : Notable and red data book moth species in VC58 in 2004

4. Recorders

As always we would like to thank all the recorders that are included in the following list and who have made this report possible by being kind enough to share their data. Please accept our sincere apologies for any unintentional omissions. If you have not been included on the following list please, contact one of us to let us know and we will make sure your efforts are noted in the next annual report. Barry's report is an extract from his normal annual report, in which he formally acknowledges the input of the appropriate recorders. That list has not been repeated here to save a little space. The contribution of those recorders is, of course, also greatly appreciated. AC – Alan Creaser, ACh – Andrew Charlton, ACsr – Andy Caesar, AJ – Alastair Jenkins, AK – Alan Kimber, AMB – Tony Broome, AW – Adrian Wander, BB – Brian Bull, BM – B Murphy, BMa - Brian Martin, BR – Bryan Roberts, BRh - Bob Rhodes, BS – Ben Smart, BTS - Barry Shaw, CD - Chris Darbyshire, CIR – Ian Rutherford, CK – Chris Knibbs, DC – David Cookson, DE – Dave Edwards, DH – David Hinde, DJ – David James, DO – D Otter, DS – D. Stephenson, DSh - David Shaw, DSt – Don Stenhouse, DT – Dave Taylor, EC – E. Chackal, EH - Elizabeth Hollingshead, EK – Eric Kearns, ES – Edwin Samuels, GB – Gavin Broad, GC – Graeme Cooke, GJ – Graham Jones, GL – Geoff Lightfoot, GS – G. Stringer, HD – Harry Davies, HEB – H.E. Beaumont, HLB - H.L.Burrows, HV - Holly Vance, IEL – Ian Landucci, IFS – Ian Smith, IW – Ian Wallace, JJC – Jeff Clarke, JM - Julia Mottishaw, JO – J. Oxenham, JS - John Sheldon, KM – Kevin McCabe, KN - Keith Neal, LB – Liz Bentham, LG - Lynne Greenstreet, LH – Les Hall,

MB – M. Barlow, MBe – Mel Bellingham, MBoo – Mike Boothman, MD – Mike Dale, MH – Mike Holmes, MM – Mike Mulholland, MN - Margaret Nance, MP – Mark Payne, MPo - Maurice Pons, MS - Martyn Stanyer, MSt – Mark Stubbs, MSo – Michael Stokes, NL – Nick Littlewood, NS – N Stones, P&CB – Paul and Cerys Brewster, PA - Peter Alker, PB – Peter Bowler, PBH – Peter Hardy, PCP - Paul Pugh, PG – Paul Greenall, PGr – Paul Griffiths, PH - Paul Hillyer, PJF – Paz Fletcher, PM – P Meyer, PMH – Paul M Hill, PW – Phil Woollen, RB – Roger Brereton, RFB – R. F. Botterill, RGB - Ray Bertera, RHi – Roy Hilton, RHo – Ray Holmes, RJD - Roger & Joan Davidson, SBI – Sheila Blamire, SHH – Steve Hind, SH – S. Holmes, SHeff - Stephanie Hefferan, SJM – Steve McWilliam, SMP - Steve Palmer, SO – Steve Orridge, SP – Sheila Pierce, SPC - Sean P Clancy, SPF – Shane Farrell, TE – Tom Edmondson, TO - Tom O'Neill.

5. Photography Credits and Copyright

Thank you to all photographers that have allowed their work to be used for this report. Please note that although we are keen for this report to be circulated as widely as possible (and please feel free to provide an electronic or paper copy to anyone that may be interested), none of it should be republished without the express permission of one of the authors. If such authorization is given, then the report (or extracts of it) and the authors/photographers should be duly credited in the bibliography in which the text is used. A summary of the photographs within the report is given below.

p3. White Admiral *Limenitis Camilla* - Mike Dale, Painted Lady *Vanessa cardui* – Shane Farrell,
 p4. Common Blue *Polyommatus icarus* - Shane Farrell, p5. Large White *Pieris brassicae* - Shane Farrell,
 p7. Red Admiral *Vanessa atalanta* - Shane Farrell, p8. Peacock *Inachis io* - Shane Farrell, p10. Comparison of Scarce Footman *Eilema complana* and Common Footman *E. lurideola* - Mike Dale, p17. *Metzneria lappella* - Ian Smith, *Scrobipalpa salinella* - Ian Smith, p18. *Cochylidia implicitana* - Shane Farrell,
 p20. *Eucosma tripoliana* - Ian Smith, *Calamotropha paludella* - Steve Holmes, p21. *Palpita vitrealis* - Barry Shaw, p24 Plain Pug *Eupithecia simpliciata* - Mark Payne, Bordered Beauty *Epione repandaria* - Mike Dale, p25. Pine Hawk-moth *Hyloicus pinastri* - Tony Broome, p26. Small Ranunculus *Hecatera dysodea* - Graham Jones, p27. Large Ranunculus *Polymixis flavicineta* - David Cookson, p28. Fen Wainscot *Arenostola phragmitidis* - Mike Dale, Silver Hook *Deltote uncula* - Paul Hill, p29. Lempke's Gold Spot *Plusia putnami gracilis* - Shane Farrell, p34. Lichen Case-bearer *Dahlica lichenella* – Shane Farrell, p35. Bedstraw Hawk-moth *Hyles gallii* - Mike Dale, p36. Broom-tip *Chesias rufata* - Mike Dale.

6. Useful Contact Details

If you would like a link or your contact details to be added to this list, please contact Shane Farrell.

Butterflies - Barry Shaw, Cheshire County Butterfly Recorder, 87, Gleneagles Road, Heald Green, Cheadle, Cheshire SK8 3EN. Telephone: 0161 491 0753. e-mail: btshaw@87glen.freeserve.co.uk

Micro-moths – Steve Hind, Cheshire County Micro-moth Recorder, 32 Carleton Road, Higher Poynton, Stockport, Cheshire. SK12 1TL. Telephone: 01625 859504. e-mail: steve@hind1.fsnet.co.uk

Macro-moths – Shane Farrell, Cheshire County Macro-moth Recorder, 15 Westover, Romiley, Stockport, Cheshire, SK6 3ER. Telephone: 0161 355 6919. e-mail: Shane.Farrell@ntlworld.com

rECOrd - Steve J. McWilliam (rECOrd Manager), rECOrd, Chester Zoological Gardens, Upton, Chester, CH2 1LH. Telephone: 01244 383749/383569 Fax: 01244 383569. e-mail: info@rECOrd-LRC.co.uk
 Web: www.rECOrd-LRC.co.uk

UKMoths website - <http://ukmoths.org.uk/index.php>

Cheshire Moth Group Website - <http://www.consult-eco.ndirect.co.uk/lrc/cm/g/cm/g.htm>

L&CES Website - <http://www.consult-eco.ndirect.co.uk/entomol/lces/index.htm>

BC Cheshire & Peak District Website - <http://www.butterfly-conservation.com/>